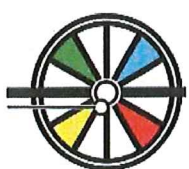


# SIXTH FORM COURSES

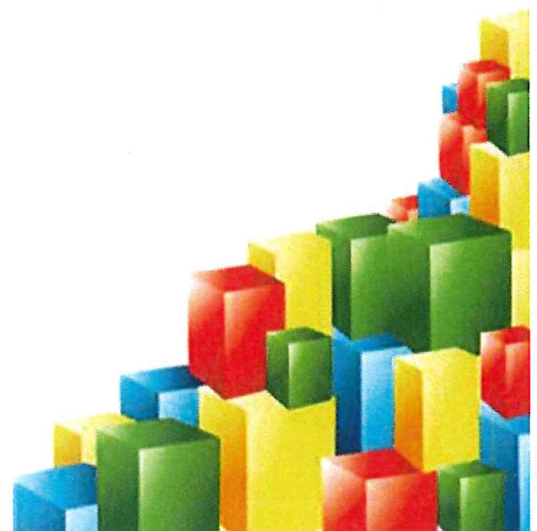
## 2024-2025



**INSPIRE AND ACHIEVE**  
BUILDING BRIGHT FUTURES TOGETHER



**THE RADCLIFFE SCHOOL**  
BUILDING BRIGHT FUTURES TOGETHER



## Sixth Form Entry Requirements – The Radcliffe School

To ensure that students are able to access the courses on offer and be successful, we require that all students have five or more 9-4 grades at GCSE (or BTEC Merits) including either English or Maths. Depending on the subjects that you select there may be additional entry requirements which are summarized below.

<b>Subject</b>	<b>Minimum Requirements</b>
<b>Art &amp; Design (Fine Art)</b>	<b>5+ in Art</b>
<b>Art &amp; Design (Graphic Communication)</b>	<b>4+ in Product Design</b>
<b>Art &amp; Design (Product Design)</b>	<b>4+ in Product Design</b>
<b>Biology A</b>	<b>5+ in Sciences and 6+ in Maths</b>
<b>Chemistry</b>	<b>5+ in Sciences and 6+ in Maths</b>
<b>Computer Science</b>	<b>6+ in Maths</b>
<b>Core Maths (AS Level)</b>	<b>4+ in Maths</b>
<b>Drama &amp; Theatre</b>	<b>5+ in English (Language or Literature)</b>
<b>English Lang &amp; Lit</b>	<b>5+ in both English Language and Literature</b>
<b>English Literature</b>	<b>5+ in both English Language and Literature</b>
<b>Film Studies</b>	<b>4+ in English (Language or Literature)</b>
<b>French</b>	<b>6+ in French (or native speaker)</b>
<b>Geography</b>	<b>5+ in English and Geography and 4+ in Maths</b>
<b>German</b>	<b>6+ in German (or native speaker)</b>
<b>History</b>	<b>5+ in English (Language or Literature) and History</b>
<b>Mathematics - Further</b>	<b>7+ in Maths</b>
<b>Media Studies</b>	<b>5+ in English (Language or Literature)</b>
<b>Music / Music Technology</b>	<b>5+ in GCSE Music or Merit+ in BTEC Music</b>
<b>Physics A</b>	<b>5+ in Sciences, 6+ in Maths</b>
<b>Politics</b>	<b>5+ in English (Language or Literature)</b>
<b>Psychology</b>	<b>5+ in English (Language or Literature) and 5+ in Maths / Science</b>
<b>Sociology</b>	<b>5+ in English (Language or Literature)</b>
<b>Applied Criminology BTEC Level 3</b>	<b>5+ in English (Language or Literature)</b>
<b>Applied Psychology BTEC Level 3</b>	<b>4+ in English and 4+ in Maths</b>
<b>Applied Science BTEC Level 3</b>	<b>4+ in Combined Science or Single Science</b>
<b>Information Technology BTEC Level 3</b>	<b>Merit+ in IT BTEC and 4+ in Maths and English</b>
<b>Business BTEC Level 3</b>	<b>Merit+ in Business BTEC</b>
<b>Sport (Single) BTEC Level 3 Foundation Diploma</b>	<b>Merit+ in Sport BTEC</b>
<b>Sport (Double) BTEC Level 3 Diploma</b>	<b>Merit+ in Sport BTEC</b>
<b>Health and Social Care CTEC Level 3</b>	<b>Merit+ in Child Development</b>

# Welcome from the Headteacher

Welcome to The Radcliffe School's Sixth Form. We hope the prospectus provides you with an overview of our Sixth Form. The Sixth Form Open Evening event is an ideal opportunity to discuss any questions you may have around our provision, or to help you consider which subjects and courses may be best for you and your future career.

At The Radcliffe School we are proud of our Sixth Form students, and it is always with mixed emotions when we say goodbye to our Year 13 students, who leave us well rounded and fully prepared to take that next step into adulthood.

Our Sixth Form offers a broad curriculum choice of both academic and vocational accreditations, which means that our students have access to a full range of destinations, be it Oxbridge, a Russell Group or any other university, degree level apprenticeships or the workplace.

We offer a personalised approach, supporting and meeting the needs of each individual. The Sixth Form team are experienced and highly trained in guiding students through the higher and further education or apprenticeship processes, offering the best personalised advice and guidance throughout their time in the Sixth Form.

As a school, we pride ourselves on getting to know our students so we can help them to fulfil their personal ambitions and potential. The school offers a unique experience, which guarantees success for those who fully engage and take advantage of the opportunities available during their time with us. When Ofsted rated our Sixth Form as Good, we were pleased to receive the validation knowing our students receive a good quality of education. But this is not the end of a journey, we continue to build on and develop our provision to provide the best opportunities and experiences for every Sixth Form student.

Our relatively small and friendly Sixth Form enables us to get to know you as a young adult and to offer you the support you might need throughout this particularly important time. Students joining our Sixth Form will be part of the exciting on-going expansion plans of our Sixth Form accommodation.

We look forward to seeing you, and discussing the exciting opportunities at The Radcliffe School.

Paula Lawson, Headteacher

# Curriculum

We are confident that you will be able to choose a combination of courses at The Radcliffe School Sixth Form that will represent your individual strengths and meet your future aspirations. We offer a broad and balanced curriculum, underpinned by a wealth of experience and knowledge.

The Radcliffe School Sixth Form has been specifically structured to ensure that it:

- promotes high levels of attainment and participation
- develops the whole person – knowledge, skills, understanding and attitudes, as well as instilling high standards and values of pride, confidence, courtesy, self-discipline respect, responsibility and co-operation
- is filled with rich first hand purposeful experiences
- is flexible and responsive to individual needs and interests
- promotes mutual respect and tolerance towards those with different faiths and beliefs, to meet the needs of future citizens of modern Britain
- encourages the use of environments and expertise beyond the classroom
- has a local, national and international dimension.

# Opportunities

At The Radcliffe School Sixth Form students have ample opportunities to get involved in activities, show off their skills or try out something different. We believe time here should be enriching and fun. We have a number of opportunities which will allow students to develop new interests, abilities and make a positive contribution to the school community.

## Opportunities that make a difference

We actively seek ways of providing students with opportunities within the wider school community to develop their leadership and organisational skills. All students take up posts as learning mentors and support their peers weekly in a variety of activities. These activities range from supporting guided reading to, numeracy tutoring, to one to one mentoring.

The Radcliffe Sixth Form has a variety of partnerships with local businesses. All students will meet a number of business men and women through our career workout, facilitated by our careers lead and supported by Worktree, to help them understand more about employability in the workplace and transferable skills. Additionally, we are linked with an enterprise adviser from Network Rail, who offers us opportunities throughout the year, including CV workshops and visits. There are a number of opportunities for students to participate in talks and seminars with different employers, as well as interview preparation and one to one guidance. Students are encouraged to consider work experience or work place visits in Year 12, to help inform their 'next steps' choices. Students have also successfully participated in the Nuffield research placements and received mentoring from the social mobility foundation.

The skills learnt from these activities and partnerships, we believe, are vital to support our students to comfortably stand out from the crowd. Some of the activities above (if complete to the required standard) can provide a national accreditation in leadership skills.

Students are encouraged on Fridays to try a different enrichment activity. These range from Origami to sketching, from Yoga to sign language. Each term there is a different selection to choose from and students can explore those different activities which are specifically identified to make a difference to student mental health. Students have the opportunity to take part in dedicated Sixth Form PE lessons, House competitions for sport and other activities and volunteer in the local community.

The Student Leadership Team are appointed each year and they contribute to shaping the provision for the Radcliffe Sixth Form. Student voice is valued and encouraged at the Radcliffe School and our students run their own Sixth Form Council. The Council is driven to make positive changes for the students and support the organisation of Sixth Form events including the Annual Prospective Parents Evening, the production of Year Books, organisation of Reward Trips and the Summer Ball.

Throughout the Sixth Form the students have a wide range of access to professionals who can inform and support the development of the skills needed to be independent adults. This can be something as simple as help filling in driving licence forms independently to cooking on a budget, from keeping yourself safe, to managing a budget. As our students grow and mature we support them with a variety of opportunities that will inform and consolidate the knowledge they need to develop into well rounded adults.

# The Radcliffe School

## Sixth Form entry requirements

The Radcliffe School Sixth Form is open to all students who wish to continue their studies beyond the age of 16, on the understanding that the student is prepared to study seriously and make a positive contribution to the school community. The decision on which course of study to follow should be made after carefully considering the level of achievement at the end of Year 11 and the subjects that are likely to further career choices.

Entry into the Sixth Form will be based on the following:

- Examination results – we require Five or more 9-4 grades at GCSE (or BTEC Merits) including either English or Maths
- Interview with senior staff at The Radcliffe School.

### Key Steps

Visit the school website for more information and a virtual tour.

26<sup>th</sup> January 2024: Deadline for submitting your online application form.

Throughout February / March: Interviews for applicants

Beginning of September: Enrolment Day

### Careers

A Careers Adviser is available on site to all Post-16 students. They provide personalised guidance and access to support on a range of issues which might affect you. This may include careers, education and financial advice and guidance.

Students can request an individual interview so that support can be personalised to meet their individual needs. The Adviser is an expert in helping make difficult decisions more manageable.

We recognise that you may be studying, or have studied, other types of qualifications in addition to GCSE's. We consider a variety of qualifications as equivalents to GCSE's. Each of our courses list specific entry requirements and these will be discussed with students at an interview.

# A Level Art, Craft & Design

Board AQA QAN 60144567

Contact: Mrs J Granger

## Why study Art & Design (Fine Art)?

Never more than in today's changing and competitive world has the creative process been so vital, the skills learnt in studying A Level Art & Design will prepare you to meet these challenges head on.

This course encourages personal, creative and imaginative approaches to Art & Design and builds upon students' strengths established during KS4. Students have the freedom to investigate any theme to create exciting and original final pieces. The work produced will be a personal response which will encourage independent and critical thinking. Equally the ability to develop concepts from initial ideas to realisation is a key component to success in this subject.

## What skills will I develop?

The course requires students to show exploration into 2 of the endorsed titles below:

- **Fine art:** for example, drawing, painting, mixed-media, sculpture, ceramics, installation, printmaking, moving image (video, film, animation) and photography.
- **Textile design:** for example, fashion design, fashion textiles, costume design, digital textiles, printed and/or dyed fabrics and materials, domestic textiles, wallpaper, interior design, constructed textiles, art textiles and installed textiles.
- **Three-dimensional design:** for example, ceramics, sculpture, exhibition design, design for theatre, television and film, interior design, product design, environmental design, architectural design, jewellery/body ornament and 3D digital design.
- **Photography:** for example, portraiture, landscape photography, still life photography, documentary photography, photojournalism, fashion photography, experimental imagery, multimedia, photographic installation and moving image (video, film, animation).

For the first term has been developed in the style of an Arts Foundation to develop a solid foundation of skills through workshops. Alongside this, students will be set a mini project from the starting point 'Seven Deadly Sins' to independently explore their chosen areas of specialism in growing depth and detail. At the end of the term both the independent project and workshops are reviewed, and students can either choose to continue or explore an alternative theme for their Independent Study. It is at this stage students will need to identify which 2 endorsements they wish to specialise in. This is a minimum requirement and there are many crossovers, so we encourage students to be flexible with their exploration.

The Art & Design course enables you to explore a full range of vocational opportunities in the visual arts including learning and experiencing from professionals within your chosen field. You will develop and demonstrate your use of the formal elements and creative skills. You will learn to give visual form to your individual thoughts, feelings, observations and ideas about the world that you live in. The A Level Art & Design course, you will have opportunities to generate practical work, ideas and research from primary and contextual sources. You will also develop your investigative, analytical, experimental, practical, technical and expressive skills and experience of working with a broad range of media, including traditional and new media technologies.

## Where can studying Art & Design (Fine Art) lead?

Completing the A Level Art & Design course can open up a wide breadth of opportunities. The Art & Design course encourages a wide range of skills to show any future higher education course or employer you are able to work across a range of skill sets with creativity and maturity. The course supports an endless number of degree and apprenticeship style courses from marketing to textile design, engineering to animation, gaming design to architecture. Our best advice is to ensure your sustained project is developed to meet some need of you required course.

## How will I be assessed?

Component 1: Personal investigation 60%. A practical investigation, into an idea, issue, concept or theme, supported by written material. The written material must confirm understanding of creative decisions and be a coherent and logically structured extended response of between 1000 and 3000 words.

Component 2: Externally set assignment 40%. Students to select 1 of 8 starting points provided by the exam board to produce their project on. They will have 15 hours unaided, supervised time to produce a finished outcome or a series of related finished outcomes, informed by their preparatory work.

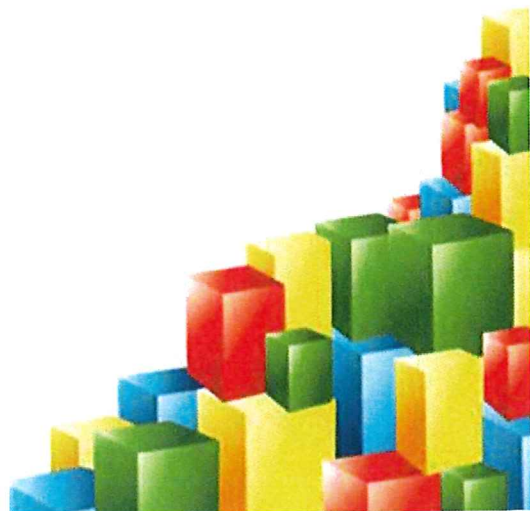
## What other subjects complement studies in Art?

Media, Design Technology, Sociology, Psychology, Performing Art, and English are subjects that particularly complement Art.



SIXTH  
FORM

**INSPIRE AND ACHIEVE**  
BUILDING BRIGHT FUTURES TOGETHER



# A Level Graphic Communication

Contact: Mr C Chisunga

## Why study Graphic Communication?

This course encourages personal, creative and imaginative approaches to Art & Design. Undertaking the AS level course in Graphic Design will enable you to explore a wide range of different media and materials. You will make responses to the world around you and create exciting innovative work. You will work to a specific design brief, solving problems in order to design and make graphic outcomes for different clients. It is essential that you enjoy creative pursuits as you will need to develop creative thinking skills and be happy to work on your own ideas. You will learn to record in a range of ways including digital photography, written annotations and traditional drawing techniques. It is essential that you have an enquiring mind as you will capture any opportunity to explore artists' and designers' work. You will discover how and why this work is made and apply what you have learnt to the development of your own work, changing and refining your work as it progresses. You will present your final design outcomes in an exhibition and will learn to discuss and present your ideas to a client.

## Where can studying Graphic Communication lead?

Studying Graphic Design will provide you with professional and creative skills, you will have rich opportunities to broaden and improve your employment prospects. The broad focus of the Graphic Design course will provide you with the flexibility required by an ever-widening creative industry. Many students choose to further their studies after Sixth Form undertaking a Foundation course at college. This route is chosen by students who want to explore a broader range of media and materials before deciding on which specialism to choose for their degree. Graphic Design graduates find rewarding careers in the visual design industries, including print and corporate design, publishing and packaging, advertising and marketing, television and digital media.

## How will I be assessed?

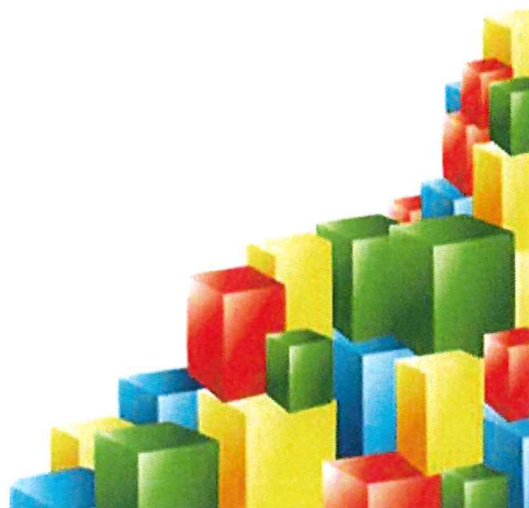
During the A Level course, 360 guided learning hours, students will explore ideas and investigate a range of themes and techniques. In year 1, students experiment, refining their work to develop a personal style and identify areas of interest.

In year 2 students complete a Personal Investigation, including a 2000-3000 word written assignment.

The course culminates in an Externally Set Assignment, where preparatory studies demonstrate students' ability to work independently within specified time constraints, leading to a 1.5-hour examination.



**INSPIRE AND ACHIEVE**  
BUILDING BRIGHT FUTURES TOGETHER





# A Level D&T: Product Design

Contact: Mrs T Thorp

All Design and Technology routes share common fundamentals: identifying requirements, learning from existing products and practice, implications of wider issues, design thinking and communication, material considerations, technical understanding, manufacturing processes and techniques, viability of design solutions and health and safety.

There are routes available that allow pupils to focus more on an area of interest. Product Design focuses on consumer products and applications; their analysis in respect of materials, components, and marketability to understand their selection and uses in industrial and commercial practices of product development.

## Why study D&T: Product Design?

- You enjoy designing and making.
- You want to progress onto a design related career
- You want to develop critical thinking and problem-solving abilities.
- You want to develop intellectual curiosity.
- You want to better understand the impact on daily life and the wider world of design decisions.
- You want to be creative in your approach to work.
- You want to develop your sketching ability and use of digital technologies.
- You want to design and prototype smaller scale products or furniture.
- You want to become an expert user of Computer Aided Design and Manufacture (CAD/CAM) software and hardware.

## What skills will I develop?

During Year 12, pupils complete a series of smaller projects that cover key skills in drawing, prototyping, use of the workshop, CAD/CAM and iterative designing. Pupils also complete series' of lessons that will prepare them for practice exam papers at waypoints throughout the year.

## How will I be assessed?

During Year 13 pupils will be assessed through a Non-Exam Assessment (NEA-coursework) which is worth 50% of the final overall grade awarded. Pupils will create their own design briefs and go through the design process culminating in a working prototype. There will also be two separate exam assessments which, combined, account for the remaining 50% of the final overall grade.

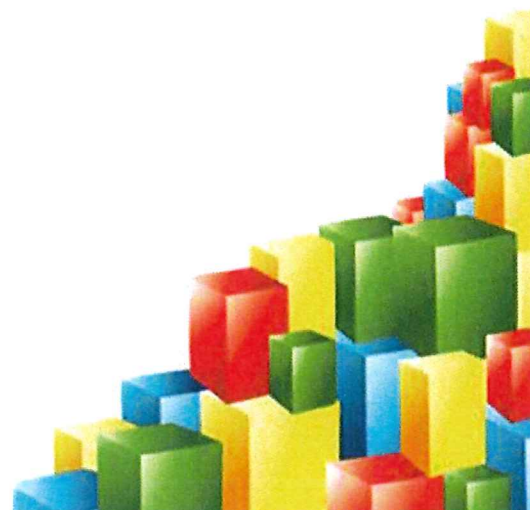
50% NEA Personal Project 50% Examination (two exams)

## What other subjects complement studies in D&T: Product Design

Maths  
Science  
Art



**INSPIRE AND ACHIEVE**  
BUILDING BRIGHT FUTURES TOGETHER



# A Level Biology

Contact: Mr G Taylor

## Why study A Level Biology?

Biology is an interesting and challenging A Level which explores life and living systems at all levels. From the molecular level of DNA structure that can control our appearance and physiology to global implications of climate change. Within living organisms you would study the biochemistry of respiration and photosynthesis inside the cells that all life is dependent on. Using microscopes you would investigate a wide range of animal and plant cells and their adaptations. Moving up a level in organisation the heart and circulatory systems is just one of the many organ systems studied in detail. At a whole organism level behaviour and classification are studied. Organisms do not live in isolation so biology includes topics on biodiversity and ecosystem interactions. Cutting edge applications of biotechnology and gene technology such as cloning and genetic engineering are also now part of the A Level course. Despite the apparent wide range of the course content there are many transferable skills such as investigative, problem solving, research, decision making, mathematical skills and analytical skills.

## Where can this subject lead?

Biology is a wonderfully varied subject, so there are many possible careers (in many different countries!) that study at A Level could lead to. Possible career choices that require Biology include Zoologist, Veterinarian, Food Technologist, Biology Educator, Medical Research Scientist, Doctor, Ecologist, Life Scientist and Marine Biologist. A Biology qualification is also well respected by an even broader range of subjects and careers which are not necessarily Science based, so A Level Biology will stand you in great stead for the future - whatever it may hold.

## How will I be assessed?

### AQA Exam Board

A Level – Assessed after a 2 year period of study

Paper 1: Written Paper – 2 hours (35% of total A Level marks)

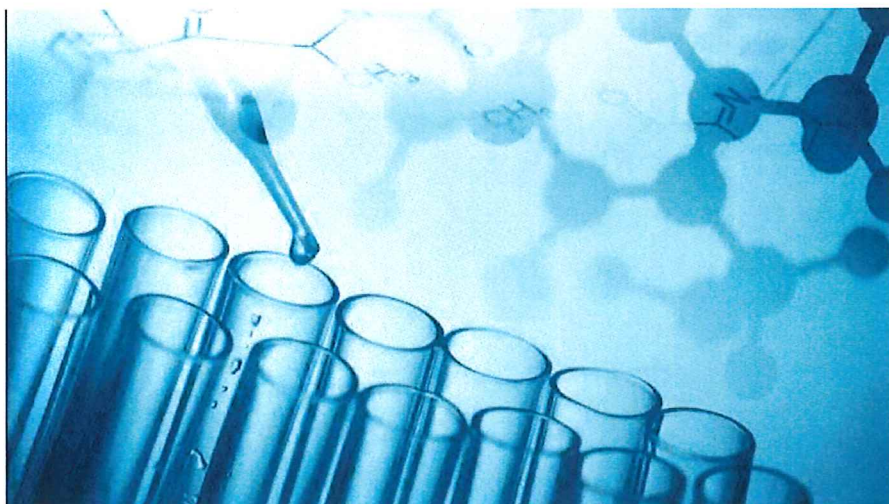
Paper 2: Written Paper –2 hours (35% of total A Level marks)

Paper 3: Written Paper including essay –2 hours (30% of total A Level marks)

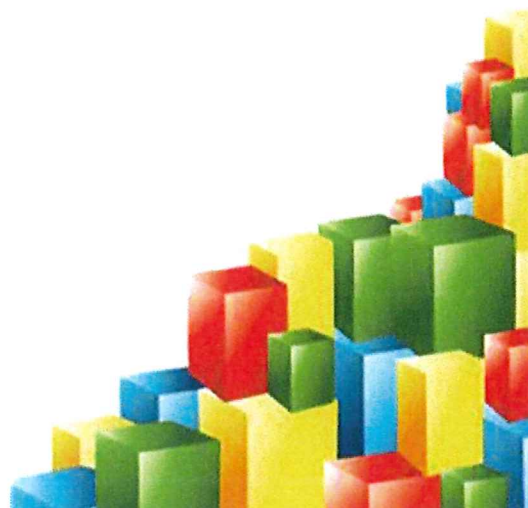
Non-Exam Assessment: All students will need to complete a minimum of 12 practical activities throughout the course to demonstrate their practical competence. These will be graded separately to the A Level and will be noted as a pass / fail result overall.

## What other subjects complement studies in Biology?

Despite popular belief, Biology can be quite numerical so a good understanding of mathematical principles is beneficial. A Level Biology begins with the study of Biochemistry so chemistry is a very useful addition to a student's skill set. The ecological components of biology can complement those students studying similar topics in Geography.



**INSPIRE AND ACHIEVE**  
BUILDING BRIGHT FUTURES TOGETHER



# A Level Chemistry

Contact: Miss J Parker

Why study A Level Chemistry?

Chemistry is the branch of science which is concerned with materials of every description. It is often called the central science as it overlaps with both Biology and Physics. Chemists unravel the chemical reactions which are responsible for life, and they investigate new materials with exciting and potentially useful properties such as highly selective catalysts and electrically conducting plastics. They are also focussed with how to control the change from one substance into another. Many modern Chemists are concerned with dramatic changes, turning, for example, crude oil into a whole range of useful and diverse products, such as nylon, aspirin, paint, adhesives and petrol. Other spectacular transformations include sand into glass and silicon chips, and nitrogen from the air into fertilisers and explosives.

Chemistry is a subject that requires a command of key scientific concepts and the development of high order practical skills. This Science affects the lives of every one of us and its study, although challenging, will reward you with a greater knowledge and understanding of the world around you.

Where can this subject lead?

Highly skilled chemists will be an essential part of our new hi-tech economy; revolutionising the storage of power, creating new super-materials, understanding and utilising nature's tremendous chemical processes, developing personalised pharmaceuticals as well as generating greener and more efficient manufacturing processes.

Chemistry is an incredibly useful subject because it overlaps with both Biology and Physics. There are many possible careers that study at A Level could lead to. Possible career choices that require Chemistry include medicine, dentistry, veterinary medicine, biomedical sciences, nursing, pharmacology, chemical engineering and pharmacy. A Chemistry qualification is also well respected by an even broader range of subjects at University and careers which are not necessarily Science based.

How will I be assessed?

You will be assessed after a 2-year period of study as follows:

Paper 1 - Periodic Table, Elements and Physical Chemistry - 2 hours 15 minutes written paper (37% of total A Level)

Paper 2 - Synthesis and Analytical Techniques - 2 hours 15 minutes written paper (37% of total A Level)

Paper 3 - Unified Chemistry - 1 hour 30 minutes written paper (26% of total A Level)

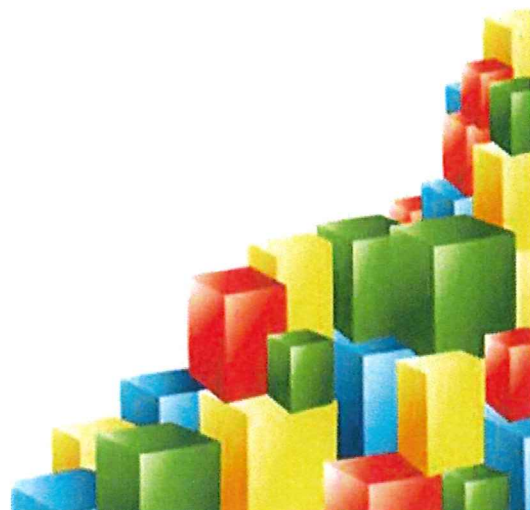
Non-examination assessment - All students will need to complete a minimum of 12 practical activities throughout the course to demonstrate their practical competence. This practical endorsement component of the course does not contribute to your overall A Level Chemistry grade.

What other subjects complement studies in Chemistry?

Chemistry is still largely a descriptive science, but increasingly, the ideas of physical and theoretical Chemistry, Physics, Quantum Mechanics etc. help to provide detailed understanding of the phenomena observed and described. AS qualifications such as Biology, Physics, Mathematics and Further Mathematics would complement the A Level Chemistry specification well.



**INSPIRE AND ACHIEVE**  
BUILDING BRIGHT FUTURES TOGETHER



# A Level Computer Science

Exam Board: OCR

QAN: 60149115

Contact: Mr A Anane

## Entry Requirements:

A minimum of English and Mathematics at grade 5 or above.

## Why study Computer Science?

Would you like to play a part in the exciting and rapid changes in communication systems that impact on our daily lives? Does working with and understanding cutting-edge technologies such as 3D graphics, virtual reality and artificial intelligence appeal? Do you enjoy solving complex problems and finding creative solutions to them? If so then Computer Science at A level will provide excellent preparation.

## What skills will I develop?

You'll learn how computer systems work, how users interact with them and you will design new systems whilst developing a very high level of proficiency in a selected programming language.

A level Computer Science builds upon the core elements of the GCSE and is similarly structured. Computer coding is at the core of the course and the department continues to use Python as its preferred language to build upon student's previous experience at GCSE. This coding is supported by an in-depth study of the underlying theory of computing and includes the study of hardware & software, networks, data representation and cyber security. It should be noted, that at this level, considerable study of the mathematics underlying this theory is both required and tested.

## Where can studying computer science lead?

Clearly studying A level Computer Science is excellent preparation for a career in the computing industry either as a professional programmer or indeed in a variety of technical, and well paid, occupations in the wider information industries, such as web support and design, cyber security, network management or software engineering. This includes a wide variety of computing courses including specialist courses in Games Design, Software Engineering, Artificial Intelligence etc. Alternatively, there are many level 3 apprenticeships available in these areas for which those with a good A level in Computing are very much in demand.

Less obviously it is a rigorous academic discipline requiring advanced analytical, mathematical, creative and communication skills. Skills that are very much in demand and which support both further study and vocational training in a wide range of other disciplines.

## How will it be assessed?

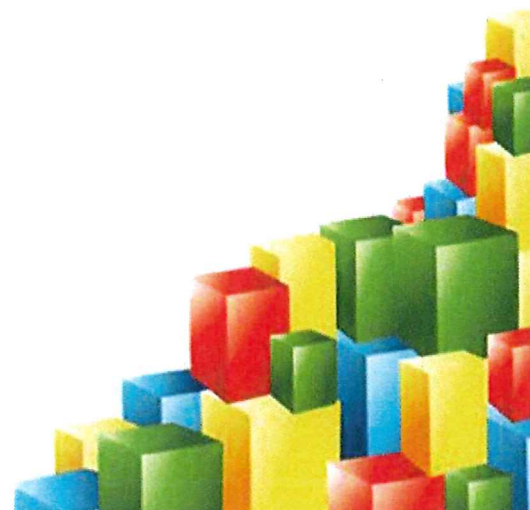
The A Level Computer Science course is assessed by means of two exam papers covering programming and theory respectively as well as a project-based assessment called the NEA (Non-Exam Assessment). At A Level each paper accounts for 40% of the overall grade with the NEA making up the final 20%. The NEA is a very open project and students may undertake it in any programming language.

## What other subjects complement Computer Studies?

Any really. Clearly there are strong links to Mathematics and Physics, but a knowledge of computing is supportive of most other academic and vocational subjects both at A level and at University.



**INSPIRE AND ACHIEVE**  
BUILDING BRIGHT FUTURES TOGETHER



# AS Level Core Maths

Contact: Mr Sarfo (KS5 Co-ordinator) or Mr Morrison (CTL)

## Why study Core Maths?

Because you want to keep up your valuable mathematical skills but are not planning to take a Full A Level in Mathematics.

You may be studying a combination of subjects including (for example; Business, Economics, Biology or Sports Science and would benefit from extra help in developing the maths (financial and statistical) you need for these areas.

You may also be interested in an extra qualification, worth UCAS points, which you complete in Year 12 and therefore can mention when you apply to a University.

## Core Maths will help you to:

- Develop valuable real-life skills, to understand mathematical information and make better informed decisions.
- Use maths in other A level subjects such as geography, social sciences and business.
- Develop knowledge, confidence and understanding in maths in preparation for university study.
- Learn useful skills for employment.
- Possibly get a better offer from some Universities!

## What skills will I develop?

- The ability to apply mathematics in real life contexts
- Personal Financial Mathematics (including student loans, mortgages, taxation).
- Estimation and critical thinking
- Using mathematical models
- Analysis and presentation of data
- Statistical techniques including hypothesis testing.

## Where can studying Core Maths lead?

There is no follow-on course but completing Core Maths will lead to confidence as you study a range of other A Level subjects and will increase your attractiveness to universities and employers. Two examination papers in May of Year 12.

## How will I be assessed?

Two examination papers in May of Year 12. There is pre-release material available in March so you will be well prepared for what you are asked.

## What other subjects complement studies in Core Maths?

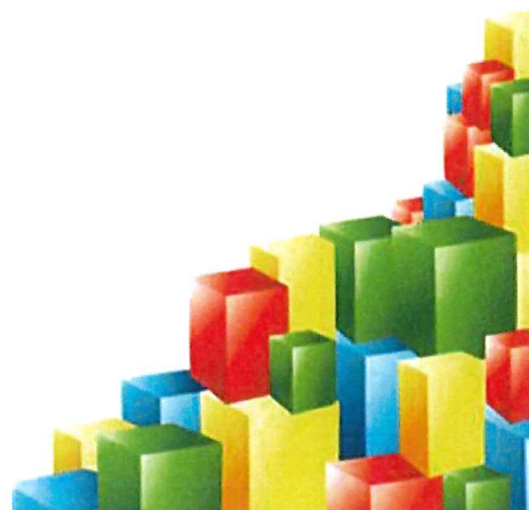
- Sociology / Criminology
- Science esp. Biology
- Psychology
- Economics
- Business Studies
- Sport
- Geography

Students taking more arts focused subjects can take this qualification if they meet the entry requirements and we are able to timetable it.



SIXTH  
FORM

**INSPIRE AND ACHIEVE**  
BUILDING BRIGHT FUTURES TOGETHER



# A Level Drama & Theatre Studies

Contact: Miss S Robinson

## Why study A Level Drama & Theatre Studies?

Drama & Theatre Studies is a practical, intellectual and artistic subject. You will be expected to explore the structural elements of theatre from the page to the stage. In order to be successful and enjoy this subject, you will need to have a keen interest in the history of drama and study of practitioners, theatrical forms and conventions that make theatre such a compelling and exciting subject. You must be able to analyse and critically deconstruct the work you study, create and witness. Current drama students have stated that they find A Level Theatre Studies challenging with an excellent mix of both practical and theory work. Students find the practical work that they take part in both years highly rewarding.

## What skills will I gain from a creative A Level in Drama & Theatre Studies?

Lessons are a healthy combination of practical learning supported by the necessary academic theory needed to understand the work being studied. Learning takes place through the following: participation in the creation, development and performance of a piece of theatre based on a reinterpretation of an extract from a text. The development of techniques and working methods of influential theatre practitioners and recognised theatre companies. The study and presentation of a variety of plays through participation in improvisation, devised work and class discussion. These methods increase understanding of the subject and provide more detail and substance to your work.

## Where can the subject lead?

The course can lead you to studying drama at university, drama school or a Performing Arts course at the end of your A Level. Many students go on to study Drama and Theatre Studies or Performing Arts at a higher level and progress to working in theatre, television, film and video. It has also proved invaluable in the journalistic, teaching and legal professions.

When students study Theatre Studies at A Level it invests them with invaluable skills in articulating thoughts, exploring ideas, sharpening communication skills and providing the ability to work within a group situation both in a practical and academic setting.

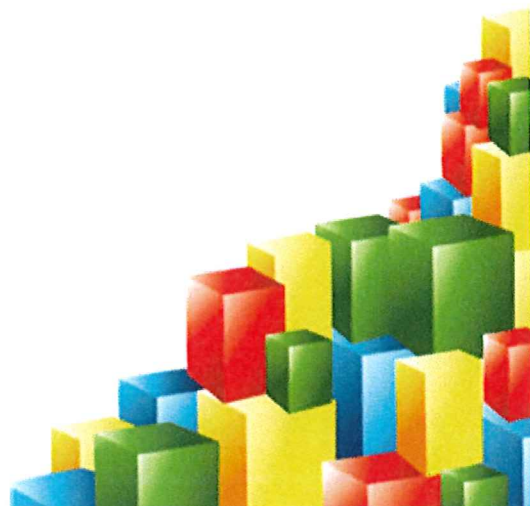
## What other subjects complement an A Level in Drama & Theatre Studies?

Drama & Theatre Studies is a popular subject as it complements many others, particularly the Arts and Humanities. However, we have found that a creative, yet still academic subject like Theatre Studies can work in combination with a variety of subjects; some other popular subjects also taken by previous students include Chemistry, English Language, Film Studies, History, Law, Maths, Media Studies, Psychology and Sociology. Even if you are not planning on studying Theatre Studies beyond A Level, it not only broadens knowledge of, and deepens an interest in, theatre but can also increase confidence, communication skills and encourage analytical discussion. Experience or knowledge is not an essential entry requirement, but being creative and having an ability to use your imagination is.



SIXTH  
FORM

**INSPIRE AND ACHIEVE**  
BUILDING BRIGHT FUTURES TOGETHER



# A Level English Language and Literature

Contact: Mr J Berry

## Why Study A Level English Language and Literature?

The A Level English Language and Literature course offers students an opportunity to combine and develop the skills they acquired in both of their English GCSEs. There will still be lots of reading to do but, unlike A Level English Literature, this course moves beyond the core of the set literary texts and enables students to explore the ways in which language is used across a wide spectrum of texts from a range of sources. This exploration will be undertaken through both analytical and creative approaches.

## Where can the subject lead?

This course encourages and develops analytical and creative approaches to problem solving: these are highly desirable skills in most professional fields. Students of A Level English Language and Literature go on to careers such as journalism, copy editing, game and website design...some even become teachers!

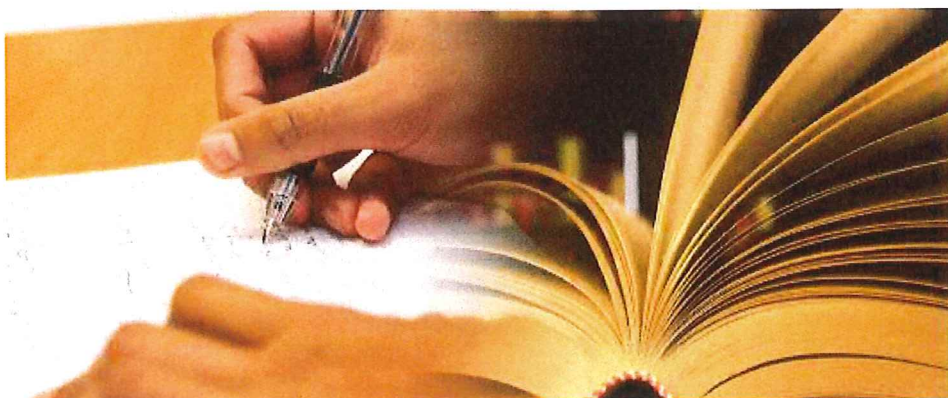
## How will I be assessed?

This A Level is a linear course: all assessment takes place at the end of Year 13.

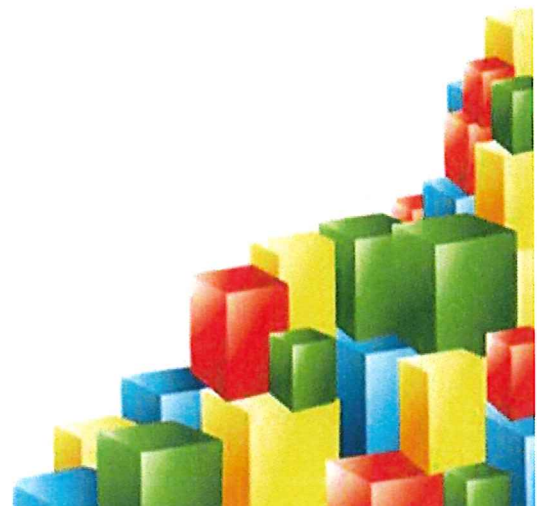
The A Level assessment is divided into three sections. Telling Stories is tested through a 3-hour examination which includes questions on the set prose and poetry texts. The Exploring Conflict examination is 2 hours 30 minutes long, testing both your knowledge of the drama set text and your creative writing ability. Each of these examinations counts for 40% of your final A Level grade; the other 20% is based on your coursework. The Making Connections coursework unit will consist of a 3,000-word essay based on texts of your own choice.

## What Other Subjects Complement English Language and Literature?

A Level English Language and Literature works well in combination with most other A Level subjects. The relevant elements of the course can enrich the learning experiences of Performance and History students in particular, while the study of any subject which requires a creative response to its challenges will benefit from the experiences offered in the A Level English Language and Literature classroom. However, due to some overlapping content, students are strongly advised not to select this course in combination with A Level English Literature.



**INSPIRE AND ACHIEVE**  
BUILDING BRIGHT FUTURES TOGETHER



# A Level English Literature

Contact: Mr J Berry

## Why study A Level English Literature?

A Level English Literature is an exciting course which offers students the opportunity to develop further the creative and analytical skills they used in GCSE English. At A Level, students study a range of six class-taught set texts and a pair of comparative coursework texts which they choose for themselves, in consultation with their teachers. English Literature offers a stimulating and exciting range of novels, plays and poetry and includes the opportunity to study texts independently.

## What other subjects complement English Literature?

English works well in combination with most Arts subjects, but Performance is especially useful (as it will inform your study of theatrical texts in English Literature) and so is History (as Historical Context is one of the English Literature course's key Assessment Objectives). Extra activities such as Wider Reading will not just complement your study of English Literature but will become an integral part of it...while appropriate visits to the theatre, the cinema and relevant museums and galleries will also help you in your studies.

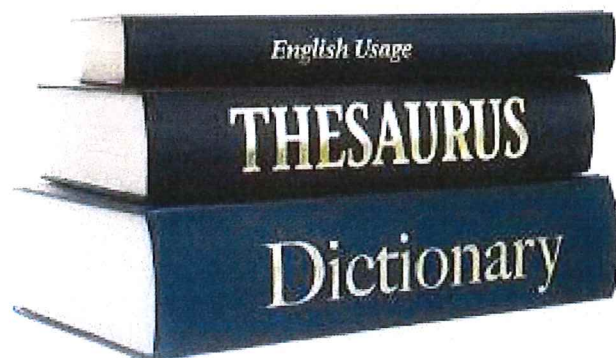
## Where can this subject lead?

This English specification is highly respected by universities, as the course's methods of delivery are very similar to those used with undergraduate students, so it is an ideal qualification for any student hoping to pursue a degree course – not just in English, but in any Arts subject. Teaching and journalism are the most common careers where an English Literature A Level qualification can be of benefit but, whatever your chosen path, this subject can be your passport to the future.

## How will I be assessed?

During the two years of the AQA English Literature A Level course you will study eight texts: your knowledge and understanding of these texts will be assessed through two examinations at the end of Year 13 and a coursework unit.

The first examination, Love through the Ages, is 3 hours long, featuring questions on Shakespeare, two other set texts and unseen poetry. The second examination, Texts in Shared Contexts, is 2 hours 30 minutes long, featuring questions on a novel, a play and a poetry collection – all written since 1900. Each examination counts for 40% of your final A Level grade. Students also complete a coursework study of 2500 words, comparing two texts of their own choice, one of which must be pre-1900. This coursework unit is worth 20% of your final A Level grade.



**INSPIRE AND ACHIEVE**  
BUILDING BRIGHT FUTURES TOGETHER





# A Level Film Studies

Contact: Mr S Truan

Why study A Level Film Studies?

Film Studies encourages students to experience a wide range of different types of films, to analyse and understand cinema as both an art form, as well as from a social and business point of view. Students will be encouraged to explore their personal responses to films, using critical language to analyse the ways in which films construct meanings. Students will understand the contexts in which films are produced by comparing films from the past and the present and from other countries and cultures.

What other subjects complement Film Studies?

The subject requires many similar skills which are required when studying English Literature, Sociology, Theatre Studies, Media and History.

Where can this subject lead?

The studying of Film could lead to possible careers within the industry, such as Film production. Additionally, the skills required could also provide opportunities in journalism or careers relating to other art forms.

How will I be assessed?

There are two examined components:

**Component 1: Varieties of Film and Film-making**

Section A: Hollywood 1930-1990 – a comparative study of one film from the classical Hollywood period (e.g., Vertigo) and one from the 'New' Hollywood period (e.g., Alien).

Section B: American film since 2005: a study of one contemporary mainstream film (e.g., Joker) and one contemporary independent film (e.g., Captain Fantastic)

Section C: British Film Since 1995: a study of two British films (e.g., Trainspotting and Shaun of the Dead)

**Component 2: Global Film-making Perspectives**

Section A: Global Film: a study of one European Film (e.g., Pan's Labyrinth) and one Film from outside Europe (e.g., City of God)

Section B: Documentary Film: study of one documentary such as Amy  
Section C: Film Movements – Silent Cinema. Study of Buster Keaton.

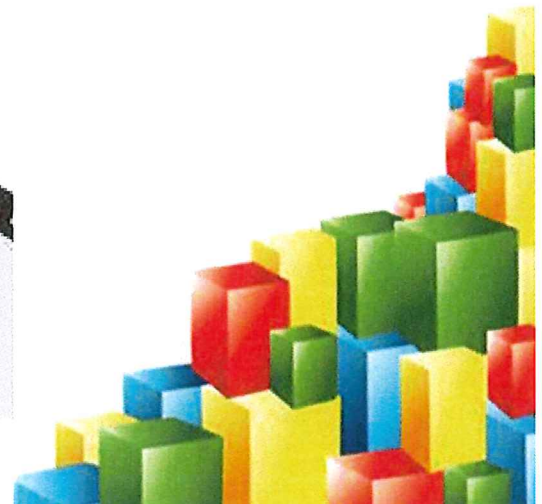
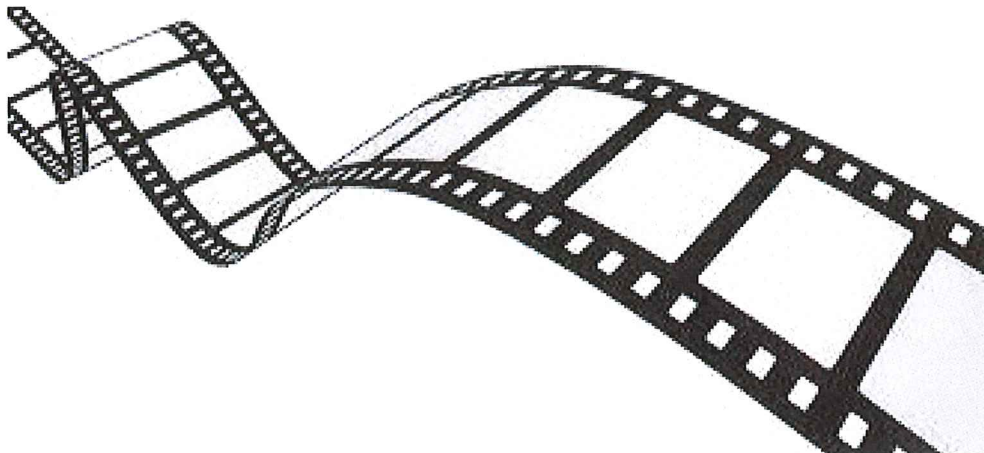
Section D: Film Movements – Experimental Film (1960-2000). Study of one film, for example Memento.

The coursework component is **Component 3: Production**

Students produce either a short film (4-5 minutes) and an evaluative analysis (1600-1800 words).



**INSPIRE AND ACHIEVE**  
BUILDING BRIGHT FUTURES TOGETHER



# A Level French

Contact: Mr F Rossi

## Why study A Level French?

Studying French gives students the opportunity to build on and expand their communication skills. The step up from GCSE is challenging, particularly in grammatical work, but you should find that this understanding of the “mechanics” of the language will enhance comprehension skills and broaden your understanding of both the language and culture of the country.

## Admission criteria:

In order to embark on the French course students should have achieved at least a grade 6 in GCSE French in order to cope with the demands at AS/A Level.

## Where can this subject lead?

The career paths for language learners are many and varied – many professions consider having a qualification in a language and the communication skills that come with it a real asset. A Level students will acquire a good standard of spoken French, listening and reading comprehension, together with an ability to communicate successfully in written form.

## How will I be assessed in Edexcel A Level French?

### Paper 1: Listening, reading and translation

Written examination: 2 hours  
40% of the qualification

#### Section A: Listening

A listening assessment based on a recording, featuring male and female French speakers. Students will respond to comprehension questions based on a variety of contexts and sources.

#### Section B: Reading

A reading assessment based on a variety of text-types and genres where students will have to respond to comprehension questions.

#### Section C: Translation into English

An unseen passage to be translated from French to English.

### Paper 2: Written response to works and translation

Written examination: 2 hours and 40 minutes  
30% of the qualification

#### Section A: Translation

Students translate an unseen passage from English into French.

#### Section B: Written response to works

Students must write an extended response on either two literary texts or one literary text and a film.

### Paper 3: Speaking

Internally conducted and externally assessed

Total assessment time: between 21 and 23 minutes, which includes a single period of 5 minutes' formal preparation time  
30% of the qualification

#### Task 1 (discussion on a Theme)

Students discuss a theme from the specification based on a stimulus containing two different statements.

#### Task 2 (presentation and discussion on independent research)

Students present a summary of the key findings of the written sources they have used for their research and answer questions on this. They then have a wider discussion on their research.

Students will be assessed on their ability to communicate and interact effectively, summarise and analyse findings from written sources relating to their research subject, manipulate language and show knowledge and understanding about the culture and society where the language is spoken.

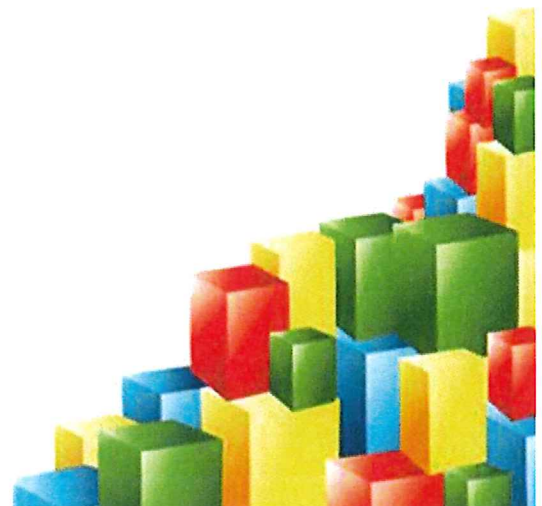
## What other subjects complement studies in French?

Students of languages can find subjects such as English, Geography and History complementary in certain skill areas. However, a modern foreign language is also regarded by many universities as a “facilitating” subject to support further study in many areas across the curriculum such as Business, Engineering, European Studies and even Speech Therapy.



SIXTH  
FORM

**INSPIRE AND ACHIEVE**  
BUILDING BRIGHT FUTURES TOGETHER



# A Level Geography

Contact: Mr S Burrows

## Why Study A- Level Geography?

Geography helps you make sense of the world around you. It tackles the big issues of environmental responsibility, global independence, cultural understanding and development on a range of topics from both physical and human geography. The world in which we live is likely to change more in the next 50 years than it has ever done before. Geography explains why and helps to prepare you for those changes. The transferable skills which Geography teaches are invaluable in preparing you for the world of work.

## Where can this subject lead?

Geographers are among the most employable people! Geography provides opportunities through fieldwork, for first hand investigation of places, environments and human behaviour. Geography builds a knowledge and understanding of current events, local and global, as well as developing skills for the future. Geography jobs include the Police force, Armed services, Teaching and Meteorology.

## How will I be assessed?

This course is linear which means that students sit all their exams at the end of the 2 year course. Students will complete mock exams in the summer term of year 12. Students have to complete a minimum of 2 days field work in both year 12 and year 13 on both physical and human Geography.

## Year 12 topics:

- Topic 1: Water and Carbon Cycles
- Topic 2: Global Systems and Global Governance
- Topic 3: Hazards
- Topic 4: Changing Places

## Year 13 topics:

- Topic 5: Coastal Systems and Landscapes
- Topic 6: Population and Environment
- Topic 7: Non-Examined Assessment (coursework)

## A-Level Geography (2-year course)

### Exam Papers

Component 1: Topics 1, 3 & 5  
2h 30m exam  
40% of A Level

Component 2: Topics 2, 4 & 6  
2h 30m exam  
40% of A Level

## Coursework: Independent Investigation

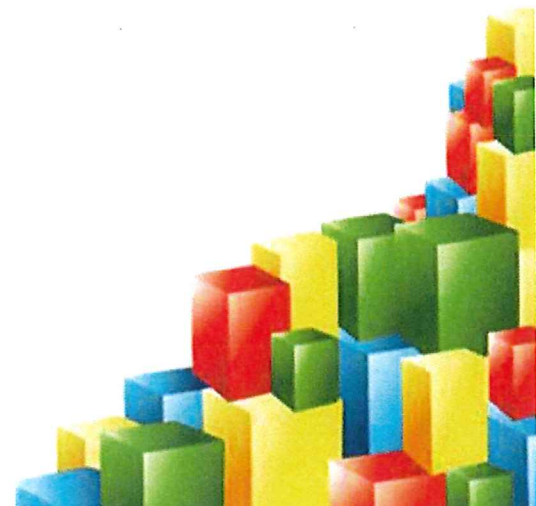
Students complete an investigation report of 3000-4000 words on a topic of their choice. Students will conduct field work as part of their investigation. It is internally marked and externally assessed worth 20% of the qualification.

## What other subjects complement Geography?

Geography complements a wide range of studies including Maths, Biology, Sociology, History and English.



**INSPIRE AND ACHIEVE**  
BUILDING BRIGHT FUTURES TOGETHER



# A Level German

Contact: Mr F Rossi

## Why study A Level German?

Studying German gives students the opportunity to build on and expand their communication skills. The step up from GCSE is challenging, particularly in grammatical work, but you should find that this understanding of the “mechanics” of the language will enhance comprehension skills and broaden your understanding of both the language and culture of the country.

## Admission criteria:

In order to embark on the German course students should have achieved at least a grade 6 in GCSE German in order to cope with the demands at A Level.

## Where can this subject lead?

The career paths for language learners are many and varied – many professions consider having a qualification in a language and the communication skills that come with it a real asset. A Level students will acquire a good standard of spoken German, listening and reading comprehension, together with an ability to communicate successfully in written form.

## How will I be assessed in Edexcel A Level German?

### Paper 1: Listening, reading and translation

Written examination: 2 hours

40% of the qualification

#### Section A: Listening

A listening assessment based on a recording, featuring male and female German speaker. Students will respond to comprehension questions based on a variety of contexts and sources.

#### Section B: Reading

A reading assessment based on a variety of text-types and genres where students will have to respond to comprehension questions.

#### Section C: Translation into English

An unseen passage to be translated from German to English.

### Paper 2: Written response to works and translation

Written examination: 2 hours and 40 minutes

30% of the qualification

#### Section A: Translation

Students translate an unseen passage from English into German.

#### Section B: Written response to works

Students must write an extended response on either two literary texts or one literary text and a film.

### Paper 3: Speaking

Internally conducted and externally assessed

Total assessment time: between 21 and 23 minutes, which includes a single period of 5 minutes' formal preparation time

30% of the qualification

#### Task 1 (discussion on a Theme)

Students discuss a theme from the specification based on a stimulus containing two different statements.

#### Task 2 (presentation and discussion on independent research)

Students present a summary of the key findings of the written sources they have used for their research and answer questions on this. They then have a wider discussion on their research.

Students will be assessed on their ability to communicate and interact effectively, summarise and analyse findings from written sources relating to their research subject, manipulate language and show knowledge and understanding about the culture and society where the language is spoken.

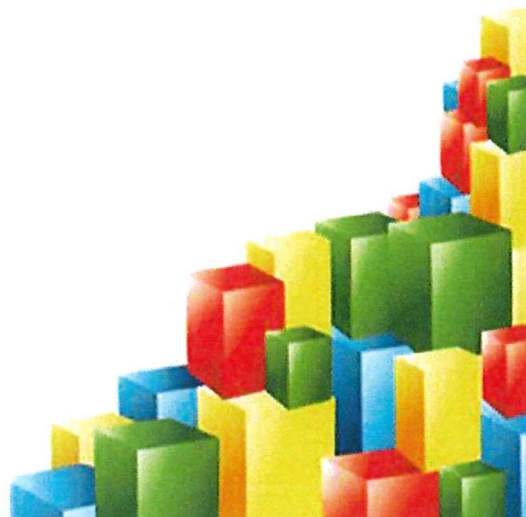
## What other subjects complement studies in German?

Students of languages can find subjects such as English, Geography and History complementary in certain skill areas. However, a modern foreign language is also regarded by many universities as a “facilitating” subject to support further study in many areas across the curriculum such as Business, Engineering, European Studies and even Speech Therapy.



SIXTH  
FORM

**INSPIRE AND ACHIEVE**  
BUILDING BRIGHT FUTURES TOGETHER



# A Level History

Contact: Miss H Snow

## Why study A Level History?

History is a facilitating subject which is highly desired by universities. History offers the opportunity to investigate aspects of the past in significant detail focusing on change and continuity as well as looking at particular features in depth. History requires an evaluative approach and a critical mind. Historians at The Radcliffe School will have to look in depth at the periods being studied and take an active role in forming their own opinions and judgements about historical controversies.

The programme of study at The Radcliffe School is the AQA specification, and we specialise in the following modules: Revolution and Dictatorship Russia 1917 – 1953, Tudor England 1485 – 1603. These modules will be carried on for both the AS and A2 courses with an additional coursework module to be studied in A2.

## Where can this subject lead?

History can be useful in many different careers such as journalism, law, research, medicine, marketing, advertising and education. Any career where prospective employers look for candidates with excellent research skills, who have the ability to form supported judgements or can critically analyse points of view will be viable for students of History.

## How will I be assessed?

### For AS History Mock:

Revolution and Dictatorship Russia 1917 – 1953

- Written exam: 2 hour 30 minutes
- Two questions (one compulsory)
- 50 marks
- 50% of AS Mock grade

Tudor England 1485 – 1603

- Written exam: 2 hour 30 minutes
- Two questions (one compulsory)
- 50 marks
- 50% of AS Mock grade

### For A2 History:

Revolution and Dictatorship Russia 1917 – 1953

- Written exam: 2 hours 30 minutes
- Three questions (one compulsory)
- 80 marks
- 40% of A Level

Tudor England 1485 – 1603

- Written exam: 2 hours 30 minutes
- Three questions (one compulsory)
- 80 marks
- 40% of A Level

### Course work:

An historical investigation on a personal study of the causes of the French Revolution. This should take the form of a question in the context of approximately 100 years. It will be around 3,500 – 4,500 words

- 40 marks
- 20% of A Level
- marked by teachers
- moderated by AQA

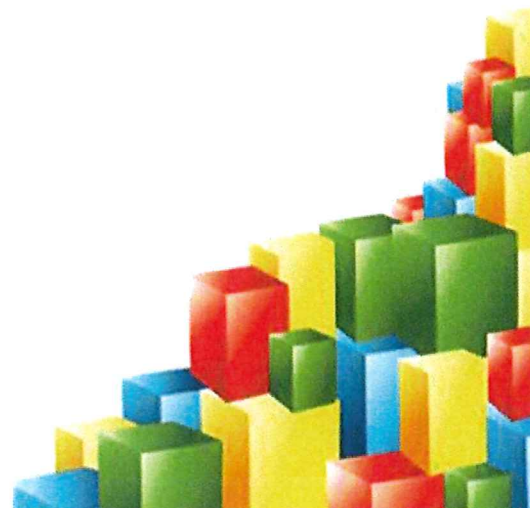
## What other subjects complement studies in History?

History complements a wide range of AS Level subjects especially English, Sociology and Geography and links can be made with Psychology, Languages, Government and Politics, Economics and Law. History is an essay based subject and will benefit from other subjects that focus on students writing extended answers to questions.



SIXTH  
FORM

**INSPIRE AND ACHIEVE**  
BUILDING BRIGHT FUTURES TOGETHER



# A Level Mathematics

Contact: Mr E Sarfo (KS5 Co-ordinator) or Mr O Morrison (CTL)

## Course Requirement

A strong grade 7 or higher, is recommended at GCSE.

It is paramount for students to have a strong grasp of all algebraic concepts taught at GCSE Maths: this is often a stumbling block at A Level, as it is possible to gain a higher grade at GCSE without the skills which form the cornerstone of A Level work.

Students learn to work steadily, to present solutions clearly and concisely, and to extend their own thinking within a logical framework. They develop resilience, as harder problems often require several attempts before a way in is identified. Specifically, students acquire the confidence to deal with information given in algebraic, numerical or graphical form, and to produce written work which is logical and concise.

The 3 units - namely, Pure Maths 1, Pure Maths 2 and Mechanics/Statistics - are weighted at 33.3% each.

This means that Pure Maths is weighted at 66.7% whilst Mechanics/Statistics together are weighted at 33.3%.

Details of how students are assessed:

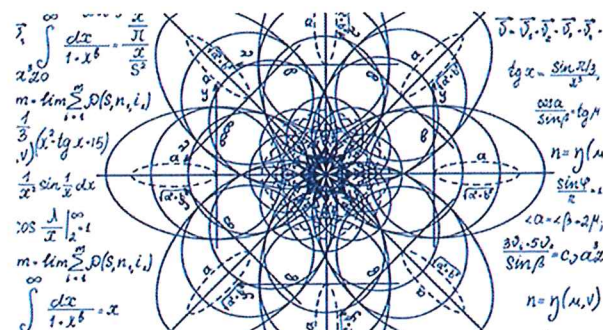
Component	Overview	Assessment
Paper 1: Pure Maths 1	AS content assessed at A Level standard	2 hours 100 marks
Paper 2: Pure Maths 2	Remaining pure content which builds on and incorporates AS content	2 hours 100 marks
Paper 3: Statistics and Mechanics	Section A: Statistics (50 marks) Section B: Mechanics (50 marks)	2 hours 100 marks

## Further Maths

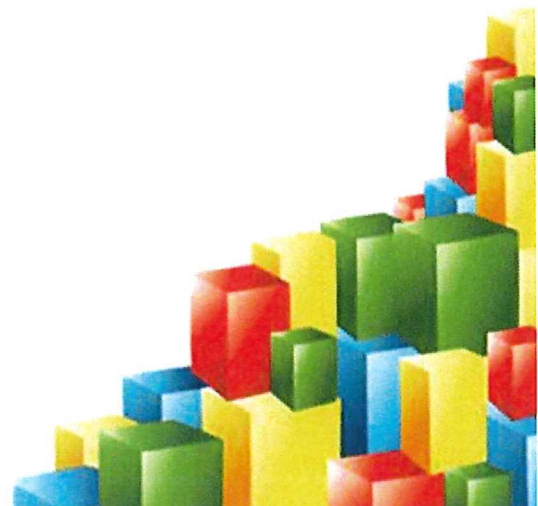
What is Further Mathematics?

The Further Maths A Level qualification broadens and deepens the Mathematics covered in A Level Maths. It is taken alongside A Level Mathematics.

Component	Overview	Assessment
Compulsory Unit Paper 1: Further Pure Maths 1	AS content assessed at A Level standard	1.5 hours 75 marks
Compulsory Unit Paper 2: Further Pure Maths 2	Remaining pure content which builds on and incorporates AS content	1.5 hours 75 marks
Paper 3: Further Maths Option 1	Students take one of the following 3 options: Further Statistics1 Further Mechanics1 Decision Maths	1.5 hours 75 marks
Paper 4: Further Maths Option 2	Students take one of the following 3 options: Further Statistics1 Further Mechanics1 Decision Maths	1.5 hours 75 marks



**INSPIRE AND ACHIEVE**  
BUILDING BRIGHT FUTURES TOGETHER



# A Level Media Studies

Contact: Mrs S O'Donnell

## Why study A Level Media Studies?

AQA A Level Media Studies is designed to enhance your understanding and appreciation of the Media and its role in your daily life. The course introduces you to both Media ideas and the practice of production, which gives you the chance to develop a real understanding of Media Platforms, the contemporary Media landscape and the influential role of the Media in today's society.

As a 'consumer' you'll become more aware of the many ways in which Media messages are presented to us, as well as discovering how the institutions which produce and distribute Media products are trying to reach you.

## Where can this subject Lead?

A Level Media Studies is an established course which is accepted by universities and is also a fantastic stepping stone into the working industries. The broad range of topics studied allow you to sample a range of sectors in the Media. Producing and evaluating your own Media productions will give you a real hands-on understanding of both how Media messages are created and what they are aiming to do.

It would be very useful for anyone considering a career in journalism, broadcasting and most other sectors of the Media industry such as Marketing and Film.

## How will I be assessed in AS Media Studies?

You will be assessed at the end of Year 2, sitting 2 exams.

Component 1 focuses on Media Products, Industries and Audiences. This is worth 35% of the qualification.

Component 2 focuses on Media Forms and Productions in depth. This is worth 35% of the qualification.

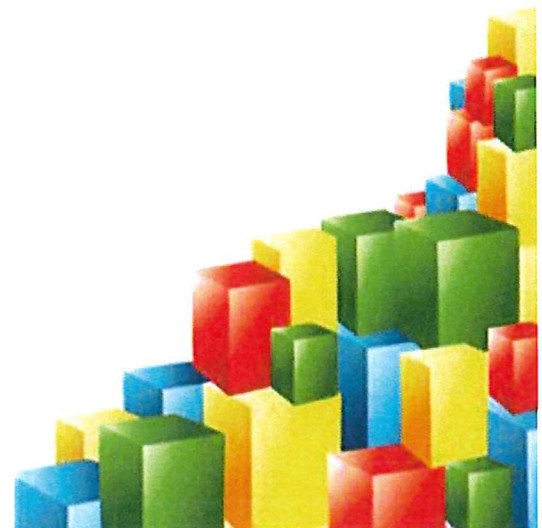
Component 3 is a non-exam assessment focusing on Cross Media Production. This is worth 30% of the qualification and will be undertaken in Year 2.

## What other subjects complement Media Studies?

The course complements any combination of AS, A Level or BTEC courses as it covers such a broad range of skills. Courses such as Business, Performance, English, Creative Writing, Film Studies, Photography and Graphics are very well coupled with Media.



**INSPIRE AND ACHIEVE**  
BUILDING BRIGHT FUTURES TOGETHER



# A Level Music Technology

Contact: Miss L Jones

## Why study Music Technology A Level?

If you are interested in how music is recorded and created for a range of applications, then this is the course for you. Students of Edexcel A Level Music Technology will engage with the diverse and dynamic heritage of music technology, extend the skills, knowledge and understanding needed to record music, and recognise the interdependence of the development of popular musical genres.

There are also various extra-curricular activities that you can get involved in, such as the school productions and concerts, local orchestras and composing for TV and video.

## What are the admissions criteria?

You will need to have achieved a grade 6 at Music GCSE or a Distinction in BTEC Music and be able to play an instrument fluently. You will also need an accurate musical ear, be able to use a Sibelius type music writing program and be committed to practising daily. You must be able to play your instrument to at least grade 5 standard.

## Where can the subject lead?

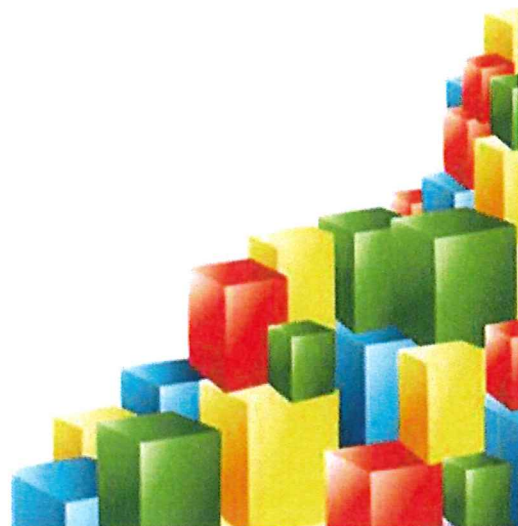
This course can lead to many areas in the music industry. There are many universities such as Kings College London, LIPA and BIMM that provide courses leading to careers such as film music composition, film and television sound management and conducting/composing.

## How will I be assessed?

The course requires a high level of musical talent, musical knowledge, high level listening skills and composition skill. Theory includes harmony, world music genres and western traditional music from the Jazz and Blues era onwards. You will be assessed on recording and mixing an audio piece of music (20%), creating a sequenced piece for film (20%), listening and analysing music (30%) and mixing/critiquing a piece (30%).



**INSPIRE AND ACHIEVE**  
BUILDING BRIGHT FUTURES TOGETHER





# A Level Physics

Contact: Mr H Foster-Smith

## Why study A Level Physics?

A Level Physics is a very high-status subject, a facilitating A Level, and a good result in the subject carries great weight when it appears on a CV or UCAS application. It is the most fundamental of all of the sciences and is essentially the study of matter and energy. Our chosen specification is modular and includes the basics of many major areas of research.

## Where can this subject lead?

Anywhere! Physics is called a facilitating subject as it is recognised by the top Universities as a subject which keeps the greatest number of choices open when choosing a degree. A qualification in Physics can also be a real advantage in employment and careers helping you to stand out from the crowd. It tells employers that a candidate has good analytical, number and communication skills. It is an obvious requirement for all of the various Engineering, Physical Science and related disciplines, however, physics students have gone on to study Medicine, Law, Computer Science and a whole range of other subjects. I also know of Physicists who have utilised their number and analytical skills in other high earning professions in the City of London.

## How will I be assessed in Physics?

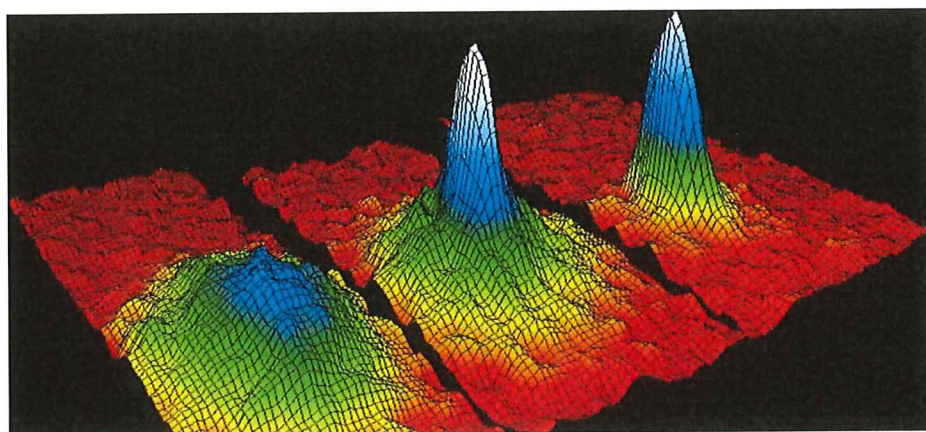
We follow the new OCR Physics A specification. The modules can be summarised as:

- Module 1: Development of practical skills.
- Module 2: Foundations of physics.
- Module 3: Forces and motion.
- Module 4: Electrons, waves, and photons.
- Module 5: Newtonian world and astrophysics.
- Module 6: Particles and medical physics.

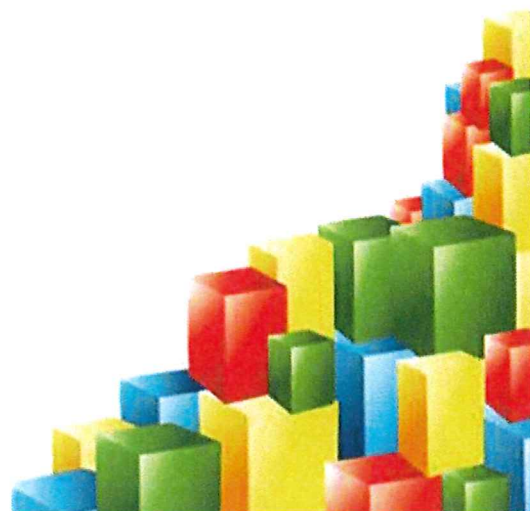
As students' progress through the course, they'll build on their knowledge of the laws of physics, applying their understanding to areas from sub-atomic particles to the entire universe.

## What other subjects complement studies in Physics?

An obvious advantage as a subject to sit alongside Physics is Mathematics; the subjects complement each other in several areas. Physics students undertake a lot of number work and mechanics and clearly the mathematical skills gained in A Level Maths will support this. Chemistry and Biology are also very important as there are transferable skills between subjects. To reinforce new learning background reading, attending lectures and watching relevant TV programmes is recommended.



**INSPIRE AND ACHIEVE**  
BUILDING BRIGHT FUTURES TOGETHER



# A Level Politics

Exam Board: AQA

Contact: Ms K Leathers

## Why study Politics?

Covering news and current affairs from the UK and US, it helps you understand how the UK country is run and develops research, written communication and debate skills. It also helps grow your confidence.

It will give an insight into the political system not just in the UK but also in the USA, you will be discussing and critically analysing a range of political ideologies.

## What skills will I develop?

- to comprehend and interpret political information
- to critically analyse and evaluate the areas of politics studied
- to construct arguments and explanations leading to reasoned conclusions
- to identify parallels, connections, similarities and differences between aspects of the areas of politics studied
- to construct and communicate arguments and explanations with relevance, clarity and coherence
- to use appropriate political vocabulary
- to make connections between the different areas of politics studied
- to make comparisons across two political systems.

## Course structure

Paper 1	Paper 2	Paper 3
<ul style="list-style-type: none"> <li>• The nature of British constitution,</li> <li>• Structure and role of parliament,</li> <li>• Prime minister and cabinet,</li> <li>• The judiciary</li> <li>• Politics in the UK</li> </ul>	<ul style="list-style-type: none"> <li>• Government and politics in the USA,</li> <li>• Legislative branch of government and executive branch of government</li> </ul>	<ul style="list-style-type: none"> <li>• Political ideologies,</li> <li>• Liberalism,</li> <li>• Conservatism,</li> <li>• Socialism,</li> <li>• Nationalism.</li> </ul>

## Where can studying Politics lead?

Politics students can go into a variety of career paths, such as becoming a member of parliament, working within other civil service roles, journalism, public relations roles, public affairs consultant etc.

## How will I be assessed?

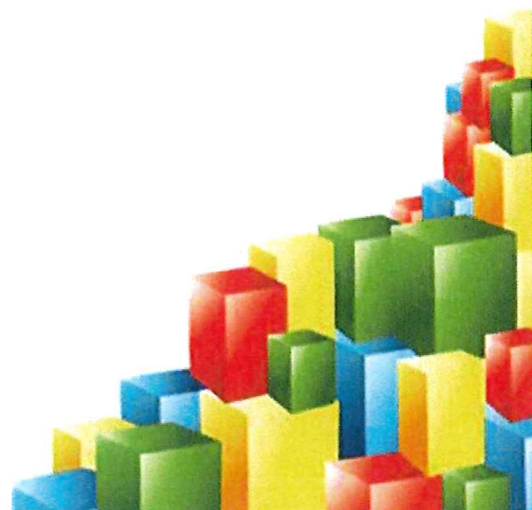
In Year 12 students are assessed through two internally assessed examinations. In Year 13 students are assessed through three, 2 hour, externally assessed examinations.

## What other subjects complement studies in Politics?

The subject bridges many different areas and so blends well with Geography, History, Psychology, Sociology, Criminology, English and Business Studies. It can be studied with any combination of subjects.



**INSPIRE AND ACHIEVE**  
BUILDING BRIGHT FUTURES TOGETHER



# A Level Psychology

Exam Board: AQA

Contact: Ms K Leathers

## Why study A Level Psychology?

Psychology helps you to understand the people that you come in to contact with every day as well as developing a deeper understanding of your own behaviour. It is a highly sought after subject at top universities. Psychology uses a mixture of theory and practical experiments to understand behaviour.

## Topics covered include:

- Social Psychology whereby we look at issues such as conformity and obedience, why do people commit genocide?
- Cognition, how does our memory work and how are we able to improve it, why do we forget?
- Developmental Psychology, how are our attachments formed and what purpose do they serve?
- Psychopathology, looking at the development and explanations for different mental disorders, who decides what is 'normal'?
- Biopsychology, looking at the interaction between neural connections and disorders and behaviours.
- Romantic relationships and their formation, maintenance and dissolution. While studying Psychology, students will look at the works of Freud, Milgram and Zimbardo and evaluate their studies whilst considering ethical issues.

Studying Psychology at A Level opens not only many career paths, but also provides you with a skills set you can transfer to almost any vocation.

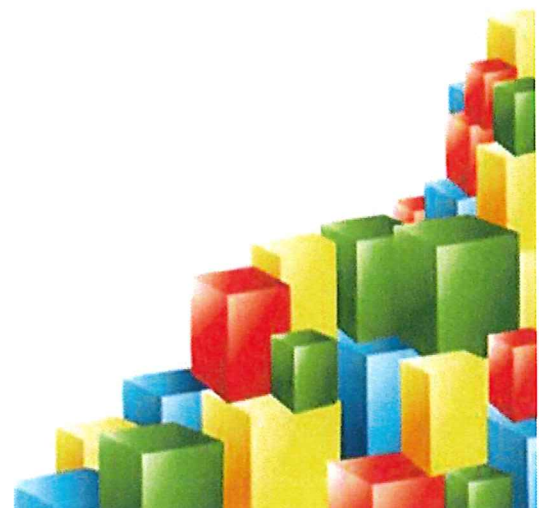
Paper 1	Paper 2	Paper 3
<ul style="list-style-type: none"><li>• Social Influence</li><li>• Memory</li><li>• Psychopathology</li><li>• Attachment</li></ul>	<ul style="list-style-type: none"><li>• Research Methods</li><li>• Approaches in psychology</li><li>• Biopsychology</li></ul>	<ul style="list-style-type: none"><li>• Issues and debates</li><li>• Relationships</li><li>• Eating behaviour</li><li>• Forensic Psychology</li></ul>
2-hour exam	2-hour exam	2-hour exam

## Where can this subject lead?

Psychology prepares you for a broad range of future career opportunities and is valued in any profession where you have to deal with people – from medics to marketers, armed forces to advertisers and teachers to therapists – Psychology gives you a valuable insight into mind and behaviour.



**INSPIRE AND ACHIEVE**  
BUILDING BRIGHT FUTURES TOGETHER



# A Level Sociology

Exam Board: AQA

Contact: Ms K Leathers

Why study A Level Sociology?

Sociology provides us with a greater understanding of society and the way it shapes people. It poses, and attempts to explain, fundamental questions relating to our very existence.

What shapes our behaviour?

Do we control our own destiny or do social pressures determine our actions?

Why do certain people do better in education than others?

Why are certain people more likely to commit crime than others?

Course Outline:

Paper 1	Paper 2	Paper 3
<ul style="list-style-type: none"><li>• Education</li><li>• Methods in context</li><li>• Theory and Methods</li></ul>	<ul style="list-style-type: none"><li>• Family and households</li><li>• Social Stratification</li></ul>	<ul style="list-style-type: none"><li>• Crime and Deviance</li><li>• Theory and Methods</li></ul>
2-hour exam	2-hour exam	2-hour exam

What other subjects complement studies in Sociology?

The subject bridges many different areas and so blends well with Geography, History, History of Art, Psychology, English and Business Studies. It can be studied with any combination of subjects.

How will I be assessed?

In Year 12 students are assessed through two internally assessed examinations. In Year 13 students are assessed through three externally assessed examinations.

Where can this subject lead?

Sociology students can pursue a wide variety of career paths including the Media, Public Relations, Law, Human Resources, Management, Teaching, Market Research, the public sector or any of the caring professions.



**INSPIRE AND ACHIEVE**  
BUILDING BRIGHT FUTURES TOGETHER

## SOCIOLOGY



# WJEC Level 3 Applied Diploma in Criminology

Exam Board: WJEC

Contact: Ms K Leathers

Why study Level 3 Diploma in Criminology?

How do we explain why people commit crime? What makes someone a serial killer, or abusive to their own families? Criminologists have produced theoretical explanations of why people commit crime, but which is the most useful? Are these theories relevant to all types of crime? What can we learn from the strengths and weaknesses of each? How can these theories be applied to real life scenarios and real-life crimes? Knowing about the different criminological approaches to theory will give you a sharper insight into the kind of thinking used by experts and politicians to explain crime and criminality. Public law makers are informed by theory and apply these theories to their own solutions to the problem of crime.....and so could you!

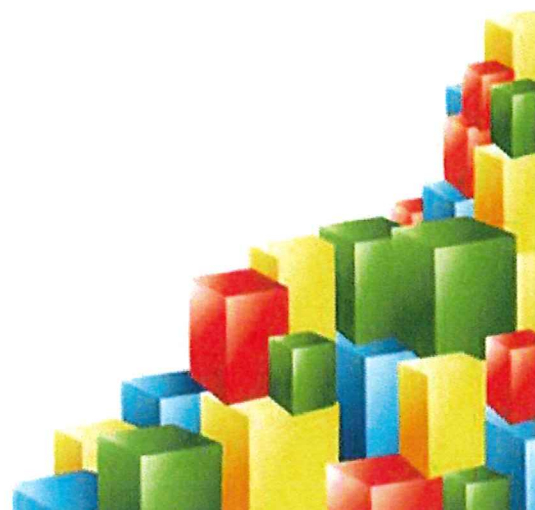
Unit title	Assessment	% of course
Unit 1: Changing awareness of crime	Controlled assessment	25%
Unit 2: Criminological theories	1hr 30 mins exam	25%
Unit 3: Crime scene to courtroom	Controlled assessment	25%
Unit 4: Crime and punishment	1hr and 30 mins exam	25%

Where can this subject lead?

People with qualifications in criminology can end up in a variety of different job roles from prison officers to solicitors or youth workers. Any role which requires working with members of the public or analytical skills would be appropriate for an individual with criminological qualifications.



**INSPIRE AND ACHIEVE**  
BUILDING BRIGHT FUTURES TOGETHER



# BTEC Level 3 National Extended Certificate in Applied Psychology

Exam Board: Pearson

Contact: Ms K Leathers

Why study BTEC Level 3 Applied Psychology?

Psychology helps you to understand the people that you come in to contact with every day as well as developing a deeper understanding of your own behaviour. It is a highly sought-after subject at top universities. Psychology uses a mixture of theory and practical experiments to understand behaviour.

Course structure:

Unit number	Unit Titles	Assessment
Unit 1	Psychological approaches and applications	External (exam)
Unit 2	Conducting Psychological research	Internal (coursework)
Unit 3	Health Psychology	External (exam)
Unit 6	Introduction to Psychopathology	Internal (coursework)

What skills will I develop?

- **Cognitive and problem-solving skills:** using critical thinking, approaching non-routine problems applying expert and creative solutions, using systems and technology
- **Interpersonal skills:** communicating, working collaboratively, negotiating and influencing, self-presentation
- **Intrapersonal skills:** self-management, adaptability and resilience, self-monitoring and development.

Where can studying BTEC Level 3 Applied Psychology lead?

Psychology prepares you for a broad range of future career opportunities and is valued in any profession where you have to deal with people – from medics to marketers, armed forces to advertisers and teachers to therapists – Psychology gives you a valuable insight into mind and behaviour.

How will I be assessed?

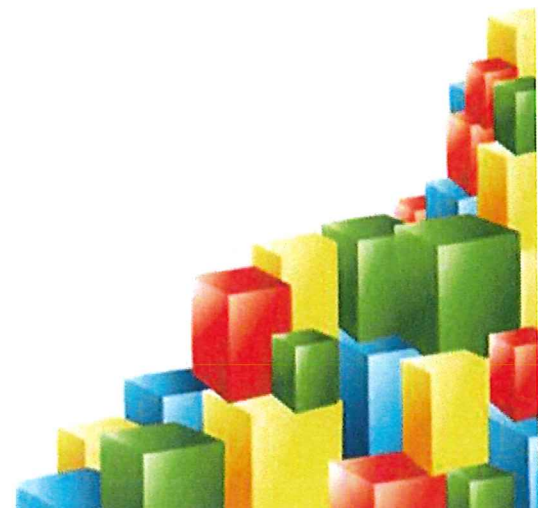
This course is assessed through two exams which is worth 58% of the total qualification and two pieces of coursework which is worth 42% of the overall qualification.

What other subjects complement studies in BTEC Level 3 Applied Psychology?

Psychology works well with a range of other humanities and social science subjects as well as Science, English and Business.



**INSPIRE AND ACHIEVE**  
BUILDING BRIGHT FUTURES TOGETHER



# BTEC Level 3 Applied Science

Contacts: Mrs C Hefferon

## Why study Level 3 Applied Science?

Explore how science works in the 'real world' with this fascinating course that covers aspects of Chemistry, Biology and Physics . . . from blood pressure and x-rays to aspects of Environmental science and detecting and quantifying unknown chemicals in household products. BTEC National Extended Certificate Level 3 in Applied Science offers students the chance to concentrate on some of the vocational aspects of Science. As well as being ideal for students seeking a broad background in Science, it also suits those entering this vocational area for the first time. Topics are wide-ranging and include learning about health and safety, how energy is transferred in homes and power stations, blood pressure and measuring the health of organs such as your heart and lungs. You will also learn about techniques used by a range of professional scientists including the opportunity to analyse chemical compounds.

## What other subjects complement the BTEC Level 3 National Extended Certificate in Applied Science?

Studying Applied Science will complement all subjects that require dedication, logical thinking and the ability to apply difficult concepts to new situations.

## Where can this subject lead?

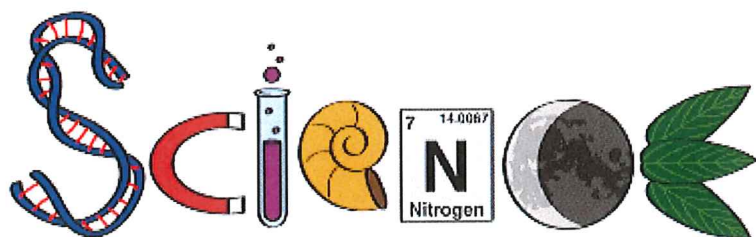
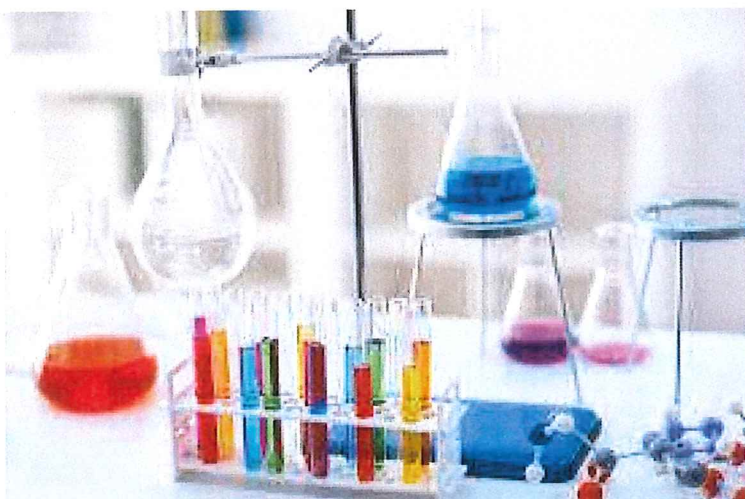
The BTEC National Level 3 Extended Certificate in Applied Science is supported by a range of Universities, and taken alongside other qualifications, it can fulfil the entry requirements for a number of Science related higher education courses, including Biomedical, Forensic and Sports Sciences, as well as nursing.

## How will I be assessed?

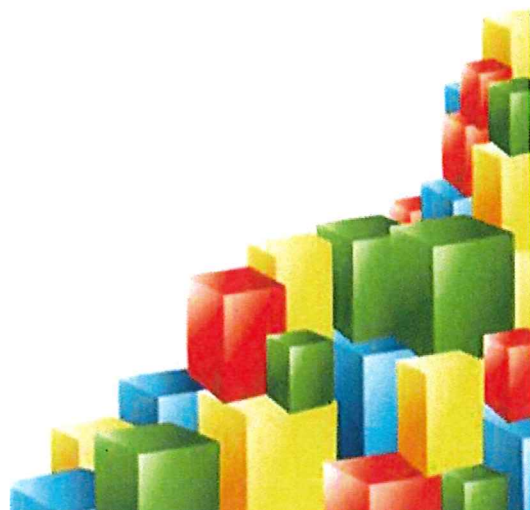
The BTEC National Level 3 Extended Certificate in Applied Science is composed 4 units of which 3 are mandatory and 2 are external:

- Unit 1 - Principles and Applications of Science I (externally assessed examination)
- Unit 2 - Practical Scientific Procedures and Techniques
- Unit 3 - Science Investigation Skills (externally assessed practical investigation)
- Unit 8 - Physiology of Human Body Systems

External assessment contributes 58% of the award of this qualification.



**INSPIRE AND ACHIEVE**  
BUILDING BRIGHT FUTURES TOGETHER



# BTEC Level 3 Information Technology

Contact: Mr A Anane

## Entry Requirements:

Merit in BTEC IT Level 2 and 4+ in Maths and English.

## Details of Course and Assessment:

IT (Information Technology) should not be confused with Computer Science. The Information Technology course allows students to develop their skills in the use of complex productivity software to solve a range of problems within a vocational context.

## Assessment Elements:

The BTEC National Information Technology course consists of three compulsory modules and one centre selected optional module. The course is assessed by means of one external written examination. One externally marked practical activity and two internally assessed coursework portfolios.

## What other subjects will Information Technology support?

Mathematics, Physics, Biology/Chemistry, Philosophy, Business Studies, Finance,

Unit	Type	Type of assessment	How it is assessed
Unit 1: Information Technology Systems	Mandatory Synoptic	Written examination Two hours	Externally assessed
Unit 2: Creating Systems to Manage Information	Mandatory Synoptic	Practical activity 10 hours	Externally assessed
Unit 3: Using social media in Business	Portfolio	Coursework	Internally assessed
Unit 5: Data Modelling	Portfolio	Coursework	Internally assessed
Unit 6: Website Development	Portfolio	Coursework	Internally assessed

Environmental Science.

## Qualities and commitment expected from the student:

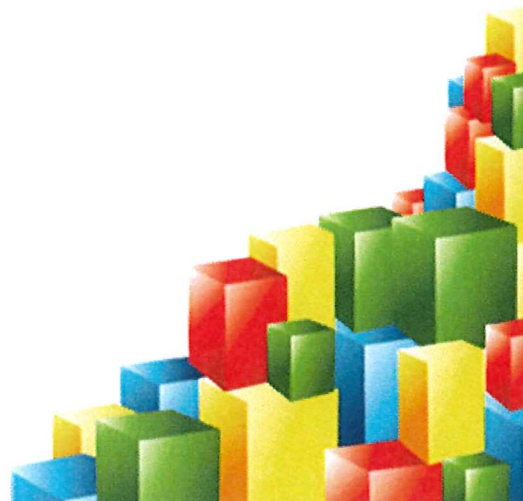
Students enrolling onto the BTEC National Information Technology course must have a keen interest in using information technology to solve a range of problems. Students will need to have a logical mind with a creative flair and a persistent and methodical approach to solving problems.

## Where can studying BTEC National Information Technology lead?

All BTEC qualifications are recognised by Universities, Business and industry. They have been designed to provide a broad education as a foundation of training leading to employment and for higher study.



**INSPIRE AND ACHIEVE**  
BUILDING BRIGHT FUTURES TOGETHER





# BTEC Level 3 National Extended Certificate in Business

Contact: Mr P Deller

## Entry Requirements:

A minimum of English and Maths at grade 4 or above.

## Why Study BTEC Business?

A BTEC in Business gives students the skills they need to either move on to higher education or go straight into employment. Level 3 BTEC Business covers all aspects of business including marketing, law, human resources and accounting. In addition, they also cover real life activities such as writing and presenting business plans.

## Where can this subject lead?

The BTEC in Business qualifies for UCAS points. It gives students a wide choice of progression options into further study, training or relevant employment in the business sector. Students who successfully complete the qualification will be well equipped to move onto degrees, BTEC Higher National Diplomas or Modern Apprenticeships.

## What other subjects complement Economics?

All subjects, but Maths and Psychology work particularly well.

## BTEC Extended Certificate

This qualification is equivalent to a single A Level and requires the student to complete four units of work including a controlled assignment and 1 exam over a 2-year period.

## How will I be assessed?

The new BTEC Nationals in Business use a combination of assessment styles to give students confidence that they can apply their knowledge to succeed in the workplace and have the study skills to continue learning throughout their career.

Unit 1: Exploring Business – This unit is internally assessed; students complete a piece of coursework.

Unit 2: Developing a marketing campaign – This is externally assessed; students complete a controlled assessment using a pre-release research task.

Unit 3: Personal & business finance – This is externally assessed; students complete a formal exam paper.

Unit 27: Work experience in Business – This is internally assessed; students study the benefits of work experience in business. They reflect on their practical workplace skills by completing forty hours of appropriate work experience.

## In year 12 students will study the following:

Unit 1: Exploring Business – Students will explore the purposes of different businesses, their structure, the effect of the external environment, and how they need to be dynamic and innovative to survive in a competitive environment.

Unit 3: Personal & business finance – Students will focus on the purpose and importance of personal and business finance. They will develop the skills and knowledge needed to understand, analyse and prepare financial information.

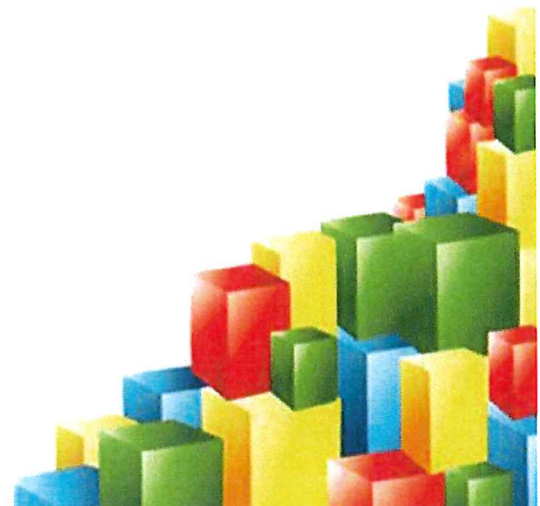
Unit 27: Work experience in Business - Students learn about different types of work-related learning and their benefits. They will understand what information you need before starting the placement, and how the placement can help to develop key competencies needed for employability, such as self-management, team working, problem solving and communication skills

## In year 13 students will study the following:

Unit 2: Developing a marketing campaign- Students will gain skills relating to, and an understanding of, how a marketing campaign is developed.



**INSPIRE AND ACHIEVE**  
BUILDING BRIGHT FUTURES TOGETHER



# BTEC Level 3 Foundation Diploma Sport

Board EDEXCEL QAN 60172204

Contact: Mr T Carey

## Why study BTEC Sport?

The need for highly trained and educated people in the world of sport is increasing in today's society. BTEC National in Sport combines up-to-date industry knowledge with the right balance of the practical, research and behavioural skills your child needs to succeed in higher education and in their careers. The BTEC National course is both a theoretical and practical, work-related course.

With a track record built over 30 years of learner success, BTEC Nationals are widely recognised by industry and higher education as the signature vocational qualification at Level 3. They provide progression to the workplace either directly or via study at a higher level. Proof comes from YouGov research, which shows that 62% of large companies have recruited employees with BTEC qualifications. What's more, well over 100,000 BTEC students apply to UK universities every year and their BTEC Nationals are accepted by over 150 UK universities and higher education institutes for relevant degree programmes either on their own or in combination with A Levels.

Students learn by completing an exam, assignments, controlled assessment and that are based on realistic workplace situations. The Diploma in Sport also presents the opportunity to gain extra qualifications in Sports Leadership and Coaching making this a valuable and worthwhile qualification.

BTECs embody a fundamentally learner-centred approach to the curriculum, with a flexible, unit-based structure and knowledge applied in project-based assessments. They focus on the holistic development of the practical, interpersonal and thinking skills required to be able to succeed in employment and higher education.

Students learn best when they can make use of their own knowledge and enthusiasm as part of the learning process. In a subject like Sport, it is often the case that learners are already motivated, knowledgeable and enthusiastic. It is right that this natural energy should be focused and rewarded and a BTEC in Sport allows this to happen. Hard work is essential but rewarded.

A further reason to study BTEC Sport with The Radcliffe School is our excellent results. Last year we achieved an outstanding 100% A\*- C.

## Where can my studies lead?

When you have finished your BTEC qualification there are numerous pathways that you can take. This subject can lead to Teaching Primary and Secondary Education, Army/RAF, Police force, Fire Service, Fitness Instructing, Sports Development, Sports Journalism, Coaching, Injuries and Rehabilitation, Physiotherapy, Sports Psychology, Sports Philosophy, Outdoor and Adventurous activities, Sport scientist, as well as leisure management. Whether you decide to study further, go on to work or an apprenticeship, or set up your own business – your BTEC National will be your passport to success in the next stage of your life. In addition, universities, professional bodies and businesses have provided letters of support confirming that these qualifications meet their entry requirements.

## How will I be assessed?

BTEC National in Sport uses a combination of assessment styles to give students confidence that they can apply their knowledge to succeed in the workplace and have the study skills to continue their learning on higher education courses and throughout their career.

This range of vocational assessments, both practical and written, mean students can showcase their learning and achievements to best effect when they take their next step; whether that's supporting applications to higher education courses or potential employers.

The BTEC National in Sport Course provides students with the opportunity to study different aspects of exercise, sport and coaching. The continuous assessment throughout the course motivates students to analyse and improve their own performance. Course work units are presented in a variety of ways including interviews, presentations, posters, resource cards, coaching and leading activities. There will also be a controlled assessment for one unit and one exam unit.



**INSPIRE AND ACHIEVE**  
BUILDING BRIGHT FUTURES TOGETHER



# BTEC Level 3 Diploma in Sport (Double Sport)

Board EDEXCEL QAN 60304601

Contact: Mr T Carey

## Why study BTEC Sport?

The need for highly trained and educated people in the world of sport is increasing in today's society. BTEC National in Sport combines up-to-date industry knowledge with the right balance of the practical, research and behavioural skills your child needs to succeed in higher education and in their careers. The BTEC National course is both a theoretical and practical, work related course.

With a track record built over 30 years of learner success, BTEC Nationals are widely recognised by industry and higher education as the signature vocational qualification at Level 3. They provide progression to the workplace either directly or via study at a higher level. Proof comes from YouGov research, which shows that 62% of large companies have recruited employees with BTEC qualifications. What's more, well over 100,000 BTEC students apply to UK universities every year and their BTEC Nationals are accepted by over 150 UK universities and higher education institutes for relevant degree programmes either on their own or in combination with A Levels.

Students learn by completing an exam, assignments, controlled assessment and that are based on realistic workplace situations. The Diploma in Sport also presents the opportunity to gain extra qualifications in Sports Leadership and Coaching making this a really valuable and worthwhile qualification.

BTECs embody a fundamentally learner-centred approach to the curriculum, with a flexible, unit-based structure and knowledge applied in project-based assessments. They focus on the holistic development of the practical, interpersonal and thinking skills required to be able to succeed in employment and higher education.

Students learn best when they can make use of their own knowledge and enthusiasm as part of the learning process. In a subject like Sport it is often the case that learners are already motivated, knowledgeable and enthusiastic. It is right that this natural energy should be focused and rewarded and a BTEC in Sport allows this to happen. Hard work is essential, but rewarded.

A further reason to study BTEC Sport with The Radcliffe School is our excellent results. Last year we achieved an outstanding 100% Distinctions

## Where can my studies lead?

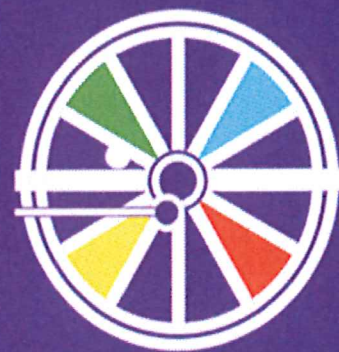
When you have finished your BTEC qualification there are numerous pathways that you can take. This subject can lead to Teaching Primary and Secondary Education, Army/RAF, Police force, Fire Service, Fitness Instructing, Sports Development, Sports Journalism, Coaching, Injuries and Rehabilitation, Physiotherapy, Sports Psychology, Sports Philosophy, Outdoor and Adventurous activities, Sport scientist, as well as leisure management. Whether you decide to study further, go on to work or an apprenticeship, or set up your own business – your BTEC National will be your passport to success in the next stage of your life. In addition, universities, professional bodies and businesses have provided letters of support confirming that these qualifications meet their entry requirements.

## How will I be assessed?

BTEC National in Sport uses a combination of assessment styles to give students confidence that they can apply their knowledge to succeed in the workplace and have the study skills to continue their learning on higher education courses and throughout their career.

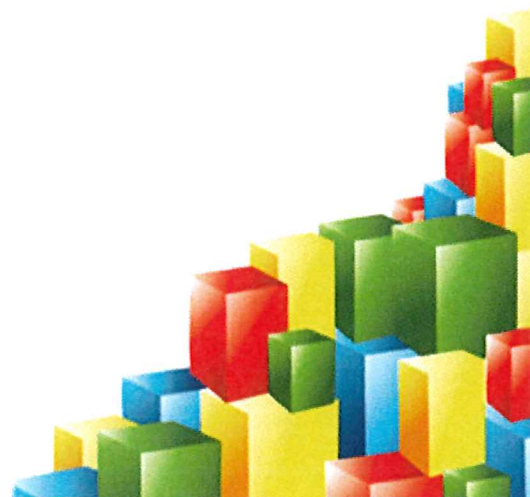
This range of vocational assessments, both practical and written, mean students can showcase their learning and achievements to best effect when they take their next step; whether that's supporting applications to higher education courses or potential employers.

The BTEC Level 3 Diploma in Sport Course provides students with the opportunity to study different aspects of exercise, sport and coaching. The continuous assessment throughout the course motivates students to analyse and improve their own performance. Coursework units are presented in a variety of ways including: interviews, presentations, posters, resource cards, coaching and leading activities. There will also be two controlled assessments and one exam unit. The Diploma is worth 2 A levels.



SIXTH  
FORM

**INSPIRE AND ACHIEVE**  
BUILDING BRIGHT FUTURES TOGETHER



# OCR Cambridge Technical Level 3 Health and Social Care

Contact: Mrs M Rogers

## Why Study Health and Social Care?

A CTEC in Health and Social Care can help you achieve your full potential. You are rewarded along the way for consistent hard work and demonstration of knowledge. There is an active approach to learning within the Health and Social context which builds confidence, skills and motivation. This qualification isn't just about caring for babies or the elderly and the ill; it will provide learners with the skills, knowledge and understanding to progress into Higher Education on a health and social care-related programme such as Health and Social Care, Nursing, Social Work or Early Childhood Studies. This qualification is part of a suite of Cambridge Technicals in Health and Social Care with the Level 3 qualifications designed for learners who are 16 years old or over who wish to study and/or be employed in the health and social care sector. Learners will take six units made up of mandatory and optional units:

Everybody will study the following mandatory units:

- Building positive relationships in health and social care
- Equality, diversity and rights in health and social care
- Health, safety and security in health and social care
- Anatomy and physiology for health and social care

These units will give learners an understanding of health and social care in the wider contexts of different environments and settings where care takes place, the importance of effective communication in health and social care, the importance of legislation in health and social care and how to deliver a person-centred approach in the care given. Learners will also develop transferable skills such as communication, research, planning and organisation.

Optional units will be selected from the relevant board list, but currently include the study of sexual health and reproduction and nutritional health as well as promoting public health.

## Admissions Criteria:

Students applying for the course should have 5 GCSE passes at 4-9 with a minimum **Grade 5** in **Science** and **English**.

## What other subjects complement studies in Health and Social Care?

This qualification is generally taken alongside other qualifications as part of a 2-year programme. You will then be enabled to progress to a degree programme chosen from a range of programmes in the Health and Social Care sector. The qualification is recognised by higher education institutions as contributing to meeting admission requirements to many options for example:

Combined with A Levels in Biology and Psychology, which could lead to a BSc (Hons) in Nursing.

A Levels in History and English which could lead to a BA(Hons) in Primary Education.

A Levels in Sociology and Psychology leading to Health and Social Care and Sociology BA (Joint Hons)

Job opportunities include within the NHS and other employment sectors where trained HSC staff work, including the travel industry, pharmaceutical sectors, educational settings and residential care homes.

## Where can this subject lead?

The Health and Social Care Sector employs some of the most talented and brilliant people the country has to offer. The NHS is the third largest employer in the world and has a continual need for doctors, nurses, ambulance staff and support staff, and there are further opportunities to work for the NHS in social care in hospitals, educational settings and residential homes. Other employment sectors where trained Health and Social Care staff operate include early year's provision such as nurseries and pre-schools, the travel industry, pharmaceutical foundations, charitable organisations and major business corporations. The combined magnitude of the NHS and the sizeable private and voluntary care sectors therefore provides a huge and diverse range of progressive career opportunities, both at graduate and non-graduate entry level.

## How will I be assessed in Health and Social Care?

These qualifications are assessed using a combination of:

- external assessment, set and marked by OCR. Comprises multiple choice, short answer questions and questions requiring more extended responses
- internal assessment, where the tutor assesses the learners' work and OCR externally moderate it.



SIXTH  
FORM

**INSPIRE AND ACHIEVE**  
BUILDING BRIGHT FUTURES TOGETHER





**THE RADCLIFFE SCHOOL**  
BUILDING BRIGHT FUTURES TOGETHER

**The Radcliffe School**  
Christchurch Grove  
Wolverton, Milton Keynes, MK12 5BT

W: [www.radcliffeschool.org.uk](http://www.radcliffeschool.org.uk)  
E: [admin@radcliffeschool.org.uk](mailto:admin@radcliffeschool.org.uk)  
T: 01908 682222